

**IRF4 Antibody**  
**Rabbit mAb**  
**Catalog # AP92480**

## Specification

---

### IRF4 Antibody - Product Information

Application	WB, IHC, IP
Primary Accession	<a href="#">Q15306</a>
Clonality	Monoclonal
<b>Other Names</b>	
Interferon regulatory factor 4; Irf4; LSIRF; MUM1; NFEM5;	

Isotype	Rabbit IgG
Host	Rabbit
Calculated MW	51772 Da

### IRF4 Antibody - Additional Information

Dilution	WB~~1:1000 IHC~~1:100~500 IP~~N/A
Purification	Affinity-chromatography
Immunogen	A synthesized peptide derived from human IRF4
Description	Transcriptional activator. Binds to the interferon-stimulated response element (ISRE) of the MHC class I promoter. Binds the immunoglobulin lambda light chain enhancer, together with PU.1. Probably plays a role in ISRE-targeted signal transduction mechanisms specific to lymphoid cells.
Storage Condition and Buffer	Rabbit IgG in phosphate buffered saline , pH 7.4, 150mM NaCl, 0.02% sodium azide and 50% glycerol. Store at +4°C short term. Store at -20°C long term. Avoid freeze / thaw cycle.

### IRF4 Antibody - Protein Information

**Name** IRF4 {ECO:0000303|PubMed:15489334, ECO:0000303|PubMed:8921401}

#### Function

Transcriptional activator. Binds to the interferon-stimulated response element (ISRE) of the MHC class I promoter. Binds the immunoglobulin lambda light chain enhancer, together with PU.1. Probably plays a role in ISRE-targeted signal transduction mechanisms specific to lymphoid cells. Involved in CD8(+) dendritic cell differentiation by forming a complex with the BATF-JUNB heterodimer in immune cells, leading to recognition of AICE sequence (5'-TGAnTCA/GAAA- 3'), an immune-specific regulatory element, followed by cooperative binding of BATF and IRF4 and

activation of genes.

**Cellular Location**

Nucleus. Cytoplasm

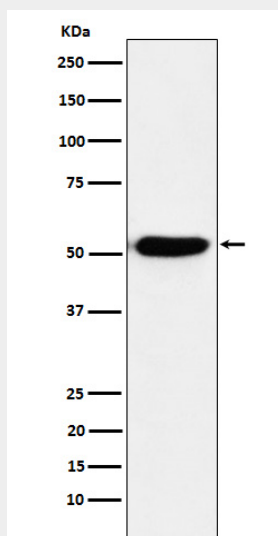
**Tissue Location**

Lymphoid cells.

**IRF4 Antibody - Protocols**

Provided below are standard protocols that you may find useful for product applications.

- [Western Blot](#)
- [Blocking Peptides](#)
- [Dot Blot](#)
- [Immunohistochemistry](#)
- [Immunofluorescence](#)
- [Immunoprecipitation](#)
- [Flow Cytometry](#)
- [Cell Culture](#)

**IRF4 Antibody - Images**

Western blot analysis of IRF4 expression in Ramos cell lysate.