

CRMP4 Antibody
Rabbit mAb
Catalog # AP92491**Specification**

CRMP4 Antibody - Product Information

Application	WB, ICC, IP
Primary Accession	Q14195
Reactivity	Rat
Clonality	Monoclonal

Other Names

CRMP4; DPYSL3; DRP3; LCRMP; TUC4; ULIP1;

Isotype	Rabbit IgG
Host	Rabbit
Calculated MW	61963 Da

CRMP4 Antibody - Additional Information

Dilution	WB~~1:1000 ICC~~N/A IP~~N/A
Purification	Affinity-chromatography
Immunogen	A synthesized peptide derived from human CRMP4
Description	Necessary for signaling by class 3 semaphorins and subsequent remodeling of the cytoskeleton. Plays a role in axon guidance, neuronal growth cone collapse and cell migration.
Storage Condition and Buffer	Rabbit IgG in phosphate buffered saline , pH 7.4, 150mM NaCl, 0.02% sodium azide and 50% glycerol. Store at +4°C short term. Store at -20°C long term. Avoid freeze / thaw cycle.

CRMP4 Antibody - Protein Information**Name** DPYSL3**Synonyms** CRMP4, DRP3, ULIP, ULIP1**Function**

Necessary for signaling by class 3 semaphorins and subsequent remodeling of the cytoskeleton. Plays a role in axon guidance, neuronal growth cone collapse and cell migration (By similarity).

Cellular Location

Cytoplasm. Cell projection, growth cone. Note=Colocalizes with synaptic vesicle protein 2 in the central region of the growth cone.

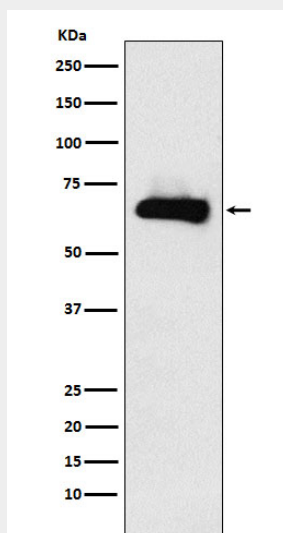
Tissue Location

Mainly expressed in heart and skeletal muscle. Also strongly expressed in fetal brain and spinal cord

CRMP4 Antibody - Protocols

Provided below are standard protocols that you may find useful for product applications.

- [Western Blot](#)
- [Blocking Peptides](#)
- [Dot Blot](#)
- [Immunohistochemistry](#)
- [Immunofluorescence](#)
- [Immunoprecipitation](#)
- [Flow Cytometry](#)
- [Cell Culture](#)

CRMP4 Antibody - Images

Western blot analysis of CRMP4 expression in Human fetal brain lysate.