

**FABPI Antibody**  
**Rabbit mAb**  
**Catalog # AP92499****Specification**

---

**FABPI Antibody - Product Information**

Application	WB
Primary Accession	<a href="#">P12104</a>
Reactivity	Rat
Clonality	Monoclonal
<b>Other Names</b>	
FABP2; FABPI; IFABP;	
Isotype	Rabbit IgG
Host	Rabbit
Calculated MW	15207 Da

**FABPI Antibody - Additional Information**

Dilution	WB~~1:1000
Purification	Affinity-chromatography
Immunogen	A synthesized peptide derived from human FABPI
Description	FABP are thought to play a role in the intracellular transport of long-chain fatty acids and their acyl-CoA esters. FABP2 is probably involved in triglyceride-rich lipoprotein synthesis.
Storage Condition and Buffer	Rabbit IgG in phosphate buffered saline , pH 7.4, 150mM NaCl, 0.02% sodium azide and 50% glycerol. Store at +4°C short term. Store at -20°C long term. Avoid freeze / thaw cycle.

**FABPI Antibody - Protein Information****Name** FABP2**Synonyms** FABPI**Function**

FABPs are thought to play a role in the intracellular transport of long-chain fatty acids and their acyl-CoA esters. FABP2 is probably involved in triglyceride-rich lipoprotein synthesis. Binds saturated long-chain fatty acids with a high affinity, but binds with a lower affinity to unsaturated long-chain fatty acids. FABP2 may also help maintain energy homeostasis by functioning as a lipid sensor.

**Cellular Location**

Cytoplasm.

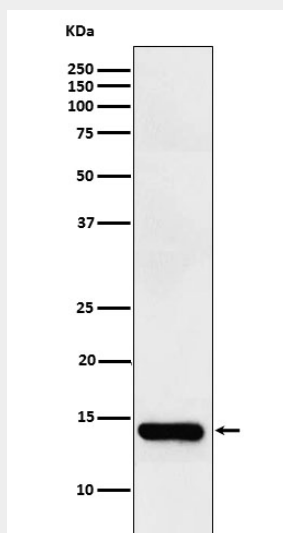
**Tissue Location**

Expressed in the small intestine and at much lower levels in the large intestine. Highest expression levels in the jejunum.

**FABPI Antibody - Protocols**

Provided below are standard protocols that you may find useful for product applications.

- [Western Blot](#)
- [Blocking Peptides](#)
- [Dot Blot](#)
- [Immunohistochemistry](#)
- [Immunofluorescence](#)
- [Immunoprecipitation](#)
- [Flow Cytometry](#)
- [Cell Culture](#)

**FABPI Antibody - Images**

Western blot analysis of intestinal FABP expression in Human small intestine lysate.