

Inhibin beta B Antibody
Rabbit mAb
Catalog # AP92500**Specification**

Inhibin beta B Antibody - Product Information

Application	WB
Primary Accession	P09529
Reactivity	Rat
Clonality	Monoclonal
Other Names	
Activin beta B; INHBB;	
Isotype	Rabbit IgG
Host	Rabbit
Calculated MW	45122 Da

Inhibin beta B Antibody - Additional Information

Dilution	WB~~1:1000
Purification	Affinity-chromatography
Immunogen	A synthesized peptide derived from human Inhibin beta B
Description	Inhibins and activins inhibit and activate, respectively, the secretion of follitropin by the pituitary gland. Inhibins/activins are involved in regulating a number of diverse functions such as hypothalamic and pituitary hormone secretion, gonadal hormone secretion, germ cell development and maturation, erythroid differentiation, insulin secretion, nerve cell survival, embryonic axial development or bone growth, depending on their subunit composition.
Storage Condition and Buffer	Rabbit IgG in phosphate buffered saline , pH 7.4, 150mM NaCl, 0.02% sodium azide and 50% glycerol. Store at +4°C short term. Store at -20°C long term. Avoid freeze / thaw cycle.

Inhibin beta B Antibody - Protein Information**Name** INHBB**Function**

Inhibins and activins inhibit and activate, respectively, the secretion of follitropin by the pituitary gland. Inhibins/activins are involved in regulating a number of diverse functions such as hypothalamic and pituitary hormone secretion, gonadal hormone secretion, germ cell

development and maturation, erythroid differentiation, insulin secretion, nerve cell survival, embryonic axial development or bone growth, depending on their subunit composition. Inhibins appear to oppose the functions of activins. Inhibin B is a dimer of alpha and beta-B that plays a crucial role in the regulation of the reproductive system by inhibiting the secretion of follicle-stimulating hormone (FSH) from the anterior pituitary gland. Thereby, maintains reproductive homeostasis in both males and females. Acts as a more potent suppressor of FSH release than inhibin A (By similarity). Functions as competitive receptor antagonist binding activin type II receptors with high affinity in the presence of the TGF-beta type III coreceptor/TGFBR3L (By similarity).

Cellular Location

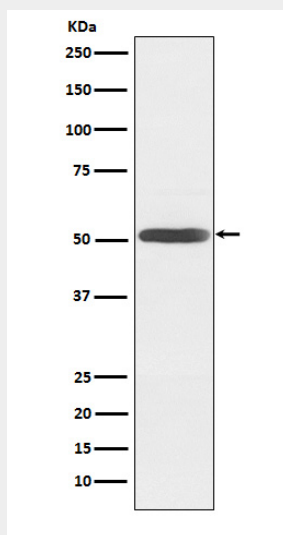
Secreted.

Inhibin beta B Antibody - Protocols

Provided below are standard protocols that you may find useful for product applications.

- [Western Blot](#)
- [Blocking Peptides](#)
- [Dot Blot](#)
- [Immunohistochemistry](#)
- [Immunofluorescence](#)
- [Immunoprecipitation](#)
- [Flow Cytometry](#)
- [Cell Culture](#)

Inhibin beta B Antibody - Images



Western blot analysis of Inhibin beta B expression in Mouse brain lysate.