

NAIP Antibody
Rabbit mAb
Catalog # AP92503

Specification

NAIP Antibody - Product Information

Application	WB
Primary Accession	<u>Q13075</u>
Clonality	Monoclonal
Other Names	
BIRC1; Birc1a; NAIP; Naip1; NLRB1; psiNAIP;	
Isotype	Rabbit IgG
Host	Rabbit
Calculated MW	159582 Da

NAIP Antibody - Additional Information

Dilution	WB~~1:1000
Purification	Affinity-chromatography
Immunogen	A synthesized peptide derived from human NAIP
Description	Prevents motor-neuron apoptosis induced by a variety of signals. Possible role in the prevention of spinal muscular atrophy that seems to be caused by inappropriate persistence of motor-neuron apoptosis: mutated or deleted forms of NAIP have been found in individuals with severe spinal muscular atrophy.
Storage Condition and Buffer	Rabbit IgG in phosphate buffered saline , pH 7.4, 150mM NaCl, 0.02% sodium azide and 50% glycerol. Store at +4°C short term. Store at -20°C long term. Avoid freeze / thaw cycle.

NAIP Antibody - Protein Information

Name NAIP

Synonyms BIRC1

Function

Anti-apoptotic protein which acts by inhibiting the activities of CASP3, CASP7 and CASP9. Can inhibit the autocleavage of pro-CASP9 and cleavage of pro-CASP3 by CASP9. Capable of inhibiting CASP9 autoproteolysis at 'Asp-315' and decreasing the rate of auto proteolysis at 'Asp-330'. Acts as a mediator of neuronal survival in pathological conditions. Prevents motor-neuron apoptosis induced by a variety of signals. Possible role in the prevention of spinal muscular atrophy that seems to be caused by inappropriate persistence of motor- neuron apoptosis: mutated or deleted

forms of NAIP have been found in individuals with severe spinal muscular atrophy.

Tissue Location

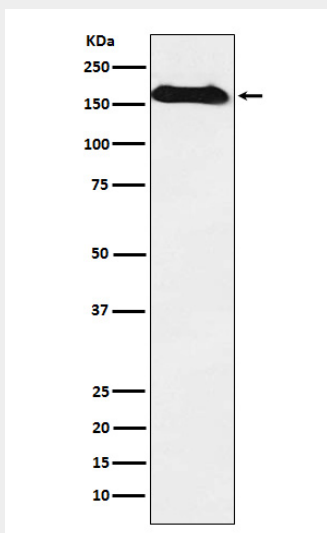
Expressed in motor neurons, but not in sensory neurons. Found in liver and placenta, and to a lesser extent in spinal cord

NAIP Antibody - Protocols

Provided below are standard protocols that you may find useful for product applications.

- [Western Blot](#)
- [Blocking Peptides](#)
- [Dot Blot](#)
- [Immunohistochemistry](#)
- [Immunofluorescence](#)
- [Immunoprecipitation](#)
- [Flow Cytometry](#)
- [Cell Culture](#)

NAIP Antibody - Images



Western blot analysis of NAIP expression in Human fetal kidney lysate.