

SSTR5 Antibody
Rabbit mAb
Catalog # AP92507**Specification**

SSTR5 Antibody - Product Information

Application	WB, FC
Primary Accession	P35346
Reactivity	Rat
Clonality	Monoclonal
Other Names	
SSTR5; SS5R; Sstr5;	
Isotype	Rabbit IgG
Host	Rabbit
Calculated MW	39202 Da

SSTR5 Antibody - Additional Information

Dilution	WB~~1:1000 FC~~1:10~50
Purification	Affinity-chromatography
Immunogen	A synthesized peptide derived from human SSTR5
Description	Receptor for somatostatin 28 and to a lesser extent for somatostatin-14. The activity of this receptor is mediated by G proteins which inhibit adenylyl cyclase.
Storage Condition and Buffer	Rabbit IgG in phosphate buffered saline , pH 7.4, 150mM NaCl, 0.02% sodium azide and 50% glycerol. Store at +4°C short term. Store at -20°C long term. Avoid freeze / thaw cycle.

SSTR5 Antibody - Protein Information**Name** SSTR5**Function**

Receptor for somatostatin 28 and to a lesser extent for somatostatin-14. The activity of this receptor is mediated by G proteins which inhibit adenylyl cyclase. Increases cell growth inhibition activity of SSTR2 following heterodimerization.

Cellular Location

Cell membrane; Multi-pass membrane protein.

Tissue Location

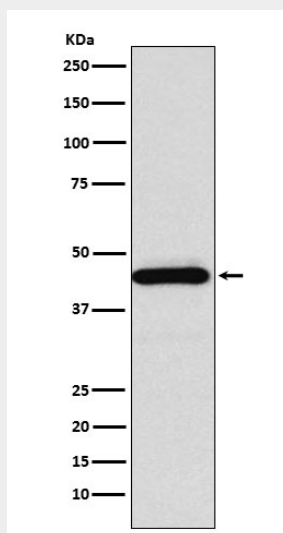
Adult pituitary gland, heart, small intestine, adrenal gland, cerebellum and fetal hypothalamus. No expression in fetal or adult kidney, liver, pancreas, uterus, spleen, lung, thyroid or ovary.

SSTR5 Antibody - Protocols

Provided below are standard protocols that you may find useful for product applications.

- [Western Blot](#)
- [Blocking Peptides](#)
- [Dot Blot](#)
- [Immunohistochemistry](#)
- [Immunofluorescence](#)
- [Immunoprecipitation](#)
- [Flow Cytometry](#)
- [Cell Culture](#)

SSTR5 Antibody - Images



Western blot analysis of Somatostatin Receptor 5 expression in HeLa cell lysate.