

**FKBP38 Antibody**  
**Rabbit mAb**  
**Catalog # AP92509****Specification**

---

**FKBP38 Antibody - Product Information**

Application	WB, FC, ICC
Primary Accession	<a href="#">Q14318</a>
Clonality	Monoclonal
<b>Other Names</b>	
FKBP 38; Fkbp8; FKBPR38; hFKBP38; Rotamase; Sam11;	

Isotype	Rabbit IgG
Host	Rabbit
Calculated MW	44562 Da

**FKBP38 Antibody - Additional Information**

Dilution	WB~~1:1000 FC~~1:10~50 ICC~~N/A
Purification	Affinity-chromatography
Immunogen	A synthesized peptide derived from human FKBP38
Description	Constitutively inactive PPIase, which becomes active when bound to calmodulin and calcium. Seems to act as a chaperone for BCL2, targets it to the mitochondria and modulates its phosphorylation state.
Storage Condition and Buffer	Rabbit IgG in phosphate buffered saline , pH 7.4, 150mM NaCl, 0.02% sodium azide and 50% glycerol. Store at +4°C short term. Store at -20°C long term. Avoid freeze / thaw cycle.

**FKBP38 Antibody - Protein Information****Name** FKBP8**Synonyms** FKBP38**Function**

Constitutively inactive PPIase, which becomes active when bound to calmodulin and calcium. Seems to act as a chaperone for BCL2, targets it to the mitochondria and modulates its phosphorylation state. The BCL2/FKBP8/calmodulin/calcium complex probably interferes with the binding of BCL2 to its targets. The active form of FKBP8 may therefore play a role in the regulation of apoptosis. Involved in the inhibition of viral infection by influenza A viruses (IAV) (PubMed:<a href="http://www.uniprot.org/citations/28169297" target="\_blank">28169297</a>).

**Cellular Location**

Mitochondrion. Mitochondrion membrane; Single-pass membrane protein; Cytoplasmic side  
[Isoform 3]: Mitochondrion membrane; Single-pass membrane protein; Cytoplasmic side

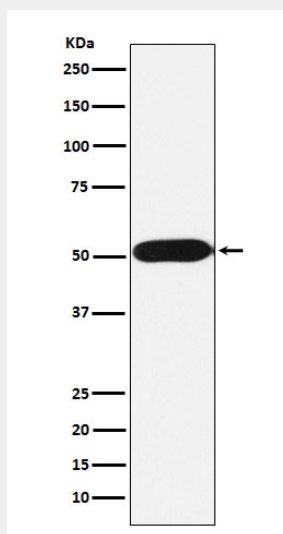
**Tissue Location**

Widely expressed. Highest levels seen in the brain. Highly abundant in the retina.

**FKBP38 Antibody - Protocols**

Provided below are standard protocols that you may find useful for product applications.

- [Western Blot](#)
- [Blocking Peptides](#)
- [Dot Blot](#)
- [Immunohistochemistry](#)
- [Immunofluorescence](#)
- [Immunoprecipitation](#)
- [Flow Cytometry](#)
- [Cell Culture](#)

**FKBP38 Antibody - Images**

Western blot analysis of FKBP38 expression in Jurkat cell lysate.