

ESRRG Antibody
Rabbit mAb
Catalog # AP92510

Specification

ESRRG Antibody - Product Information

Application	WB
Primary Accession	P62508
Reactivity	Rat
Clonality	Monoclonal
Other Names	
ERR 3; ERR gamma 2; ERR3; ERRG2; ERRgamma; ESRRG; NR3B3;	
Isotype	Rabbit IgG
Host	Rabbit
Calculated MW	51306 Da

ESRRG Antibody - Additional Information

Dilution	WB~~1:1000
Purification	Affinity-chromatography
Immunogen	A synthesized peptide derived from human ESRRG
Description	Orphan receptor that acts as transcription activator in the absence of bound ligand. Binds specifically to an estrogen response element and activates reporter genes controlled by estrogen response elements.
Storage Condition and Buffer	Rabbit IgG in phosphate buffered saline , pH 7.4, 150mM NaCl, 0.02% sodium azide and 50% glycerol. Store at +4°C short term. Store at -20°C long term. Avoid freeze / thaw cycle.

ESRRG Antibody - Protein Information

Name ESRRG

Synonyms ERR3, ERRG2, KIAA0832, NR3B3

Function

Orphan receptor that acts as a transcription activator in the absence of bound ligand. Binds specifically to an estrogen response element and activates reporter genes controlled by estrogen response elements (By similarity). Induces the expression of PERM1 in the skeletal muscle.

Cellular Location

Nucleus.

Tissue Location

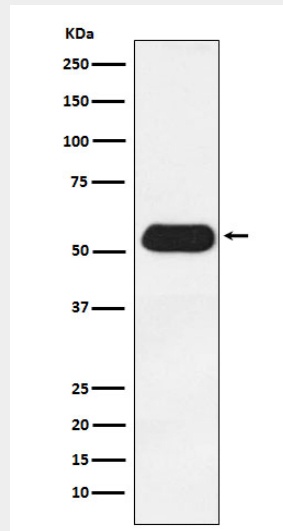
Expressed in the heart, kidney, brain, lung, bone marrow, adrenal gland, trachea, spinal cord and thyroid gland

ESRRG Antibody - Protocols

Provided below are standard protocols that you may find useful for product applications.

- [Western Blot](#)
- [Blocking Peptides](#)
- [Dot Blot](#)
- [Immunohistochemistry](#)
- [Immunofluorescence](#)
- [Immunoprecipitation](#)
- [Flow Cytometry](#)
- [Cell Culture](#)

ESRRG Antibody - Images



Western blot analysis of Estrogen Related Receptor gamma expression in Human fetal heart lysate.