

RhoGAP Antibody
Rabbit mAb
Catalog # AP92516

Specification

RhoGAP Antibody - Product Information

Application	WB, IHC, FC
Primary Accession	Q13017
Reactivity	Rat
Clonality	Monoclonal
Other Names	
ARHGAP5; p190 B; p190 RhoGAP; Rho GTPase activating protein 5; RhoGAP; RhoGAP5;	
Isotype	Rabbit IgG
Host	Rabbit
Calculated MW	172460 Da

RhoGAP Antibody - Additional Information

Dilution	WB~~1:1000 IHC~~1:100~500 FC~~1:10~50
Purification	Affinity-chromatography
Immunogen	A synthesized peptide derived from human RhoGAP
Description	GTPase-activating protein for Rho family members (PubMed:8537347).
Storage Condition and Buffer	Rabbit IgG in phosphate buffered saline , pH 7.4, 150mM NaCl, 0.02% sodium azide and 50% glycerol. Store at +4°C short term. Store at -20°C long term. Avoid freeze / thaw cycle.

RhoGAP Antibody - Protein Information

Name ARHGAP5

Synonyms RHOGAP5

Function

GTPase-activating protein for Rho family members (PubMed:8537347).

Cellular Location

Cytoplasm. Cell membrane; Peripheral membrane protein. Note=Also membrane-associated in a fibrillar pattern that colocalizes with the alpha5-beta1 integrin receptor (ITGA5/ITGB1) for fibronectin.

Tissue Location

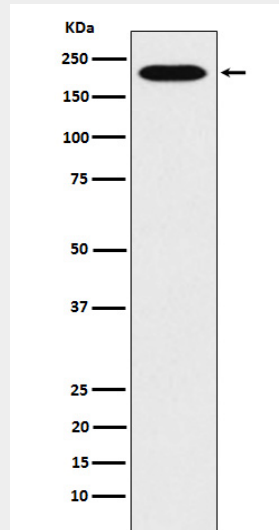
Detected in skin fibroblasts (at protein level) (PubMed:8537347).

RhoGAP Antibody - Protocols

Provided below are standard protocols that you may find useful for product applications.

- [Western Blot](#)
- [Blocking Peptides](#)
- [Dot Blot](#)
- [Immunohistochemistry](#)
- [Immunofluorescence](#)
- [Immunoprecipitation](#)
- [Flow Cytometry](#)
- [Cell Culture](#)

RhoGAP Antibody - Images



Western blot analysis of RhoGAP expression in HeLa cell lysate.