

PI 3 Kinase R4 Antibody
Rabbit mAb
Catalog # AP92517**Specification****PI 3 Kinase R4 Antibody - Product Information**

Application	WB, IHC, FC, ICC
Primary Accession	Q99570
Reactivity	Rat
Clonality	Monoclonal
Other Names	
P150; Phosphoinositide 3 kinase regulatory subunit 4; PI3 kinase p150 subunit; PIK3R4; VPS15;	
Isotype	Rabbit IgG
Host	Rabbit
Calculated MW	153103 Da

PI 3 Kinase R4 Antibody - Additional Information

Dilution	WB~~1:1000 IHC~~1:100~500 FC~~1:10~50 ICC~~N/A
Purification	Affinity-chromatography
Immunogen	A synthesized peptide derived from human PI 3 Kinase R4
Description	Regulatory subunit of the PI3K complex. May regulate membrane trafficking late in the endocytic pathway.
Storage Condition and Buffer	Rabbit IgG in phosphate buffered saline , pH 7.4, 150mM NaCl, 0.02% sodium azide and 50% glycerol. Store at +4°C short term. Store at -20°C long term. Avoid freeze / thaw cycle.

PI 3 Kinase R4 Antibody - Protein Information**Name** PIK3R4**Synonyms** VPS15 {ECO:0000303|PubMed:23878393}**Function**

Regulatory subunit of the PI3K complex that mediates formation of phosphatidylinositol 3-phosphate; different complex forms are believed to play a role in multiple membrane trafficking pathways: PI3KC3-C1 is involved in initiation of autophagosomes and PI3KC3-C2 in maturation of autophagosomes and endocytosis. Involved in regulation of degradative endocytic trafficking and cytokinesis, probably in the context of PI3KC3-C2 (PubMed:20643123).

Cellular Location

Late endosome. Cytoplasmic vesicle, autophagosome. Membrane; Lipid-anchor. Note=As component of the PI3K complex I localized to pre-autophagosome structures. As component of the PI3K complex II localized predominantly to endosomes. Localizes also to discrete punctae along the ciliary axoneme (By similarity) {ECO:0000250|UniProtKB:Q8VD65, ECO:0000305}

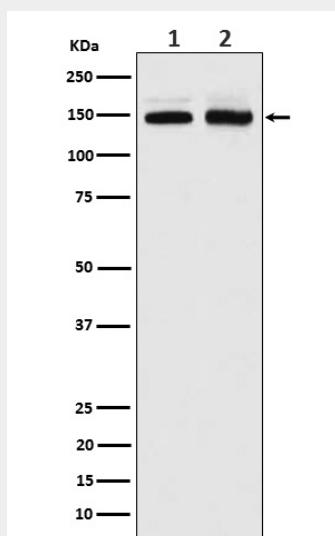
Tissue Location

Ubiquitously expressed.

PI 3 Kinase R4 Antibody - Protocols

Provided below are standard protocols that you may find useful for product applications.

- [Western Blot](#)
- [Blocking Peptides](#)
- [Dot Blot](#)
- [Immunohistochemistry](#)
- [Immunofluorescence](#)
- [Immunoprecipitation](#)
- [Flow Cytometry](#)
- [Cell Culture](#)

PI 3 Kinase R4 Antibody - Images

Western blot analysis of PI 3 Kinase R4 expression in (1) Jurkat cell lysate; (2) Molt-4 cell lysate.