

**eIF3e Antibody**  
**Rabbit mAb**  
**Catalog # AP92519**

## Specification

### eIF3e Antibody - Product Information

Application	WB, ICC
Primary Accession	<a href="#">P60228</a>
Reactivity	Rat
Clonality	Monoclonal
<b>Other Names</b>	
eIF3e; EIF3S6; eIFe;	
Isotype	Rabbit IgG
Host	Rabbit
Calculated MW	52221 Da

### eIF3e Antibody - Additional Information

Dilution	WB~~1:1000 ICC~~N/A
Purification	Affinity-chromatography
Immunogen	A synthesized peptide derived from human eIF3e
Description	Component of the eukaryotic translation initiation factor 3 (eIF-3) complex, which is required for several steps in the initiation of protein synthesis.
Storage Condition and Buffer	Rabbit IgG in phosphate buffered saline , pH 7.4, 150mM NaCl, 0.02% sodium azide and 50% glycerol. Store at +4°C short term. Store at -20°C long term. Avoid freeze / thaw cycle.

### eIF3e Antibody - Protein Information

**Name** EIF3E {ECO:0000255|HAMAP-Rule:MF\_03004}

#### Function

Component of the eukaryotic translation initiation factor 3 (eIF-3) complex, which is required for several steps in the initiation of protein synthesis (PubMed:<a href="http://www.uniprot.org/citations/17581632" target="\_blank">17581632</a>, PubMed:<a href="http://www.uniprot.org/citations/25849773" target="\_blank">25849773</a>, PubMed:<a href="http://www.uniprot.org/citations/27462815" target="\_blank">27462815</a>). The eIF-3 complex associates with the 40S ribosome and facilitates the recruitment of eIF-1, eIF-1A, eIF-2:GTP:methionyl- tRNAi and eIF-5 to form the 43S pre-initiation complex (43S PIC). The eIF-3 complex stimulates mRNA recruitment to the 43S PIC and scanning of the mRNA for AUG recognition. The eIF-3 complex is also required for disassembly and recycling of post-termination ribosomal complexes and subsequently prevents premature joining of the 40S and 60S ribosomal

subunits prior to initiation (PubMed:<a href="http://www.uniprot.org/citations/17581632" target="\_blank">17581632</a>). The eIF-3 complex specifically targets and initiates translation of a subset of mRNAs involved in cell proliferation, including cell cycling, differentiation and apoptosis, and uses different modes of RNA stem-loop binding to exert either translational activation or repression (PubMed:<a href="http://www.uniprot.org/citations/25849773" target="\_blank">25849773</a>). Required for nonsense-mediated mRNA decay (NMD); may act in conjunction with UPF2 to divert mRNAs from translation to the NMD pathway (PubMed:<a href="http://www.uniprot.org/citations/17468741" target="\_blank">17468741</a>). May interact with MCM7 and EPAS1 and regulate the proteasome-mediated degradation of these proteins (PubMed:<a href="http://www.uniprot.org/citations/17310990" target="\_blank">17310990</a>, PubMed:<a href="http://www.uniprot.org/citations/17324924" target="\_blank">17324924</a>).

#### Cellular Location

Cytoplasm. Nucleus, PML body.

#### Tissue Location

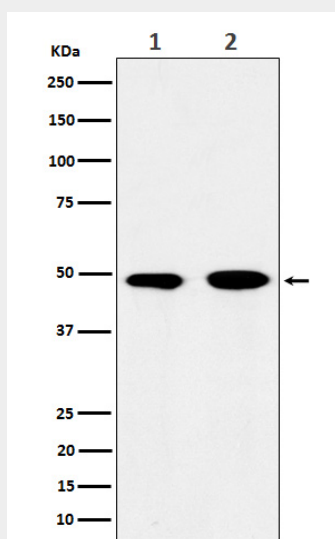
Ubiquitously expressed. Expressed at highest levels in appendix, lymph, pancreas, skeletal muscle, spleen and thymus

#### eIF3e Antibody - Protocols

Provided below are standard protocols that you may find useful for product applications.

- [Western Blot](#)
- [Blocking Peptides](#)
- [Dot Blot](#)
- [Immunohistochemistry](#)
- [Immunofluorescence](#)
- [Immunoprecipitation](#)
- [Flow Cytometry](#)
- [Cell Culture](#)

#### eIF3e Antibody - Images



Western blot analysis of eIF3e expression in (1) 293T cell lysate; (2) Jurkat cell lysate.