

WDR37 Antibody (C-term)
Affinity Purified Rabbit Polyclonal Antibody (Pab)
Catalog # AP9251b**Specification**

WDR37 Antibody (C-term) - Product Information

Application	FC, IHC-P, WB,E
Primary Accession	O9Y2I8
Other Accession	Q8CBE3
Reactivity	Human
Predicted	Mouse
Host	Rabbit
Clonality	Polyclonal
Isotype	Rabbit IgG
Calculated MW	54665
Antigen Region	426-455

WDR37 Antibody (C-term) - Additional Information**Gene ID** 22884**Other Names**

WD repeat-containing protein 37, WDR37, KIAA0982

Target/Specificity

This WDR37 antibody is generated from rabbits immunized with a KLH conjugated synthetic peptide between 426-455 amino acids from the C-terminal region of human WDR37.

Dilution

FC~~1:10~50

IHC-P~~1:50~100

WB~~1:1000

E~~Use at an assay dependent concentration.

Format

Purified polyclonal antibody supplied in PBS with 0.09% (W/V) sodium azide. This antibody is purified through a protein A column, followed by peptide affinity purification.

Storage

Maintain refrigerated at 2-8°C for up to 2 weeks. For long term storage store at -20°C in small aliquots to prevent freeze-thaw cycles.

Precautions

WDR37 Antibody (C-term) is for research use only and not for use in diagnostic or therapeutic procedures.

WDR37 Antibody (C-term) - Protein Information

Name WDR37

Synonyms KIAA0982

Function Required for normal ER Ca²⁺ handling in lymphocytes. Together with PACS1, it plays an essential role in stabilizing peripheral lymphocyte populations.

Cellular Location

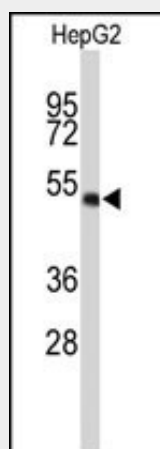
Cytoplasm. Nucleus Note=Primarily localized in the cytoplasm with the highest concentration in the perinuclear region and in small clusters at the leading edge of the spreading cells.

WDR37 Antibody (C-term) - Protocols

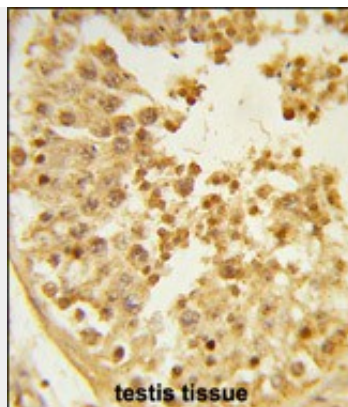
Provided below are standard protocols that you may find useful for product applications.

- [Western Blot](#)
- [Blocking Peptides](#)
- [Dot Blot](#)
- [Immunohistochemistry](#)
- [Immunofluorescence](#)
- [Immunoprecipitation](#)
- [Flow Cytometry](#)
- [Cell Culture](#)

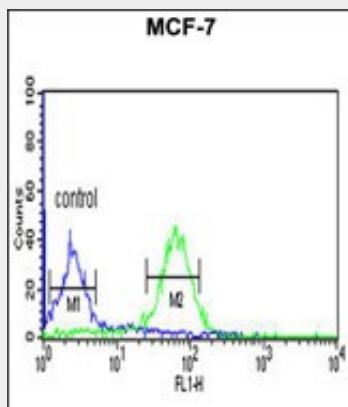
WDR37 Antibody (C-term) - Images



Western blot analysis of WDR37 Antibody (C-term) (Cat. #AP9251b) in HepG2 cell line lysates (35ug/lane). WDR37 (arrow) was detected using the purified Pab.



Formalin-fixed and paraffin-embedded human testis tissue reacted with WDR37 Antibody (C-term), which was peroxidase-conjugated to the secondary antibody, followed by DAB staining. This data demonstrates the use of this antibody for immunohistochemistry; clinical relevance has not been evaluated.



WDR37 Antibody (C-term) (Cat. #AP9251b) flow cytometric analysis of MCF-7 cells (right histogram) compared to a negative control cell (left histogram). FITC-conjugated goat-anti-rabbit secondary antibodies were used for the analysis.

WDR37 Antibody (C-term) - Background

WDR37 encodes a member of the WD repeat protein family. WD repeats are minimally conserved regions of approximately 40 amino acids typically bracketed by gly-his and trp-asp (GH-WD), which may facilitate formation of heterotrimeric or multiprotein complexes.

WDR37 Antibody (C-term) - References

Yoshida, T., Int. J. Mol. Med. 25 (4), 649-656 (2010)
Deloukas, P., et al, Nature 429 (6990), 375-381 (2004)