

EDG3 Antibody
Rabbit mAb
Catalog # AP92525**Specification**

EDG3 Antibody - Product Information

Application	WB, IHC, ICC
Primary Accession	Q99500
Clonality	Monoclonal
Other Names	
EDG3; LPB3; S1P receptor 3; S1P3; S1pr3;	
Isotype	Rabbit IgG
Host	Rabbit
Calculated MW	42250 Da

EDG3 Antibody - Additional Information

Dilution	WB~~1:1000 IHC~~1:100~500 ICC~~N/A
Purification	Affinity-chromatography
Immunogen	A synthesized peptide derived from human EDG3
Description	Receptor for the lysosphingolipid sphingosine 1-phosphate (S1P). S1P is a bioactive lysophospholipid that elicits diverse physiological effect on most types of cells and tissues. When expressed in rat HTC4 hepatoma cells, is capable of mediating S1P-induced cell proliferation and suppression of apoptosis.
Storage Condition and Buffer	Rabbit IgG in phosphate buffered saline , pH 7.4, 150mM NaCl, 0.02% sodium azide and 50% glycerol. Store at +4°C short term. Store at -20°C long term. Avoid freeze / thaw cycle.

EDG3 Antibody - Protein Information**Name** S1PR3 ([HGNC:3167](#))**Function**

Receptor for the lysosphingolipid sphingosine 1-phosphate (S1P). S1P is a bioactive lysophospholipid that elicits diverse physiological effect on most types of cells and tissues. When expressed in rat HTC4 hepatoma cells, is capable of mediating S1P-induced cell proliferation and suppression of apoptosis.

Cellular Location

Cell membrane; Multi-pass membrane protein.

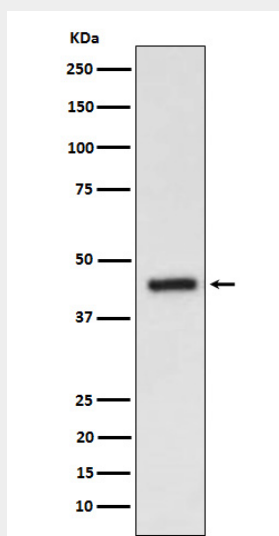
Tissue Location

Expressed in all tissues, but most abundantly in heart, placenta, kidney, and liver

EDG3 Antibody - Protocols

Provided below are standard protocols that you may find useful for product applications.

- [Western Blot](#)
- [Blocking Peptides](#)
- [Dot Blot](#)
- [Immunohistochemistry](#)
- [Immunofluorescence](#)
- [Immunoprecipitation](#)
- [Flow Cytometry](#)
- [Cell Culture](#)

EDG3 Antibody - Images

Western blot analysis of EDG3 expression in HepG2 cell lysate.