

eIF3B Antibody
Rabbit mAb
Catalog # AP92530

Specification

eIF3B Antibody - Product Information

Application	WB, FC, ICC, IP
Primary Accession	P55884
Reactivity	Rat
Clonality	Monoclonal
Other Names	
eIF3b; EIF3S9; hPrt1; PRT1;	

Isotype	Rabbit IgG
Host	Rabbit
Calculated MW	92482 Da

eIF3B Antibody - Additional Information

Dilution	WB~~1:1000 FC~~1:10~50 ICC~~N/A IP~~N/A
Purification	Affinity-chromatography
Immunogen	A synthesized peptide derived from human eIF3B
Description	Component of the eukaryotic translation initiation factor 3 (eIF-3) complex, which is required for several steps in the initiation of protein synthesis.
Storage Condition and Buffer	Rabbit IgG in phosphate buffered saline , pH 7.4, 150mM NaCl, 0.02% sodium azide and 50% glycerol. Store at +4°C short term. Store at -20°C long term. Avoid freeze / thaw cycle.

eIF3B Antibody - Protein Information

Name EIF3B {ECO:0000255|HAMAP-Rule:MF_03001}

Function

RNA-binding component of the eukaryotic translation initiation factor 3 (eIF-3) complex, which is required for several steps in the initiation of protein synthesis (PubMed:17581632, PubMed:25849773, PubMed:27462815, PubMed:9388245). The eIF-3 complex associates with the 40S ribosome and facilitates the recruitment of eIF-1, eIF-1A, eIF-2:GTP:methionyl-tRNAi and eIF-5 to form the 43S pre- initiation complex (43S PIC). The eIF-3

complex stimulates mRNA recruitment to the 43S PIC and scanning of the mRNA for AUG recognition. The eIF-3 complex is also required for disassembly and recycling of post-termination ribosomal complexes and subsequently prevents premature joining of the 40S and 60S ribosomal subunits prior to initiation (PubMed:17581632, PubMed:9388245). The eIF-3 complex specifically targets and initiates translation of a subset of mRNAs involved in cell proliferation, including cell cycling, differentiation and apoptosis, and uses different modes of RNA stem-loop binding to exert either translational activation or repression (PubMed:25849773).

Cellular Location

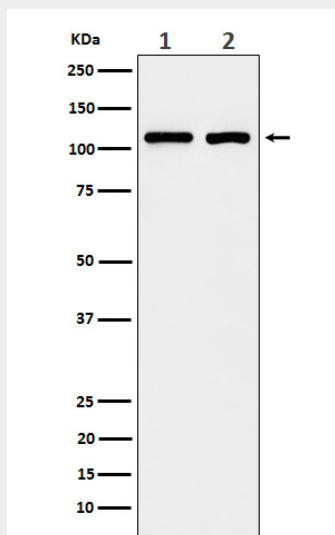
Cytoplasm {ECO:0000255|HAMAP-Rule:MF_03001}. Cytoplasm, Stress granule. Note=Localizes to stress granules following cellular stress

eIF3B Antibody - Protocols

Provided below are standard protocols that you may find useful for product applications.

- [Western Blot](#)
- [Blocking Peptides](#)
- [Dot Blot](#)
- [Immunohistochemistry](#)
- [Immunofluorescence](#)
- [Immunoprecipitation](#)
- [Flow Cytometry](#)
- [Cell Culture](#)

eIF3B Antibody - Images



Western blot analysis of eIF3B expression in (1) A431 cell lysate; (2) 293T cell lysate.