

KLC1 Antibody
Rabbit mAb
Catalog # AP92545**Specification**

KLC1 Antibody - Product Information

Application	WB, IHC, FC, ICC, IP
Primary Accession	Q07866
Reactivity	Rat
Clonality	Monoclonal
Other Names	
Kinesin2; KLC; Klc1; KNS2; KNS2A;	
Isotype	Rabbit IgG
Host	Rabbit
Calculated MW	65310 Da

KLC1 Antibody - Additional Information

Dilution	WB~~1:1000 IHC~~1:100~500 FC~~1:10~50 ICC~~N/A IP~~N/A
Purification	Affinity-chromatography
Immunogen	A synthesized peptide derived from human KLC1
Description	Kinesin is a microtubule-associated force-producing protein that may play a role in organelle transport. The light chain may function in coupling of cargo to the heavy chain or in the modulation of its ATPase activity.
Storage Condition and Buffer	Rabbit IgG in phosphate buffered saline , pH 7.4, 150mM NaCl, 0.02% sodium azide and 50% glycerol. Store at +4°C short term. Store at -20°C long term. Avoid freeze / thaw cycle.

KLC1 Antibody - Protein Information**Name** KLC1**Synonyms** KLC, KNS2**Function**

Kinesin is a microtubule-associated force-producing protein that may play a role in organelle transport (PubMed:21385839). The light chain may function in coupling of cargo to the heavy

chain or in the modulation of its ATPase activity (By similarity).

Cellular Location

Cell projection, growth cone {ECO:0000250|UniProtKB:P37285}. Cytoplasmic vesicle. Cytoplasm, cytoskeleton

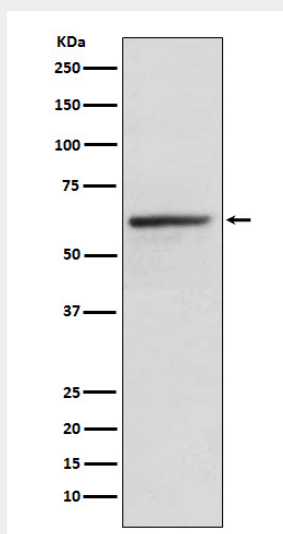
Tissue Location

Found in a variety of tissues. Mostly abundant in brain and spine.

KLC1 Antibody - Protocols

Provided below are standard protocols that you may find useful for product applications.

- [Western Blot](#)
- [Blocking Peptides](#)
- [Dot Blot](#)
- [Immunohistochemistry](#)
- [Immunofluorescence](#)
- [Immunoprecipitation](#)
- [Flow Cytometry](#)
- [Cell Culture](#)

KLC1 Antibody - Images

Western blot analysis of KLC1 expression in HeLa cell lysate.