

**TROY Antibody**  
Rabbit mAb  
Catalog # AP92547

## Specification

---

### TROY Antibody - Product Information

Application	WB, IHC, FC
Primary Accession	<a href="#">O9NS68</a>
Reactivity	Rat
Clonality	Monoclonal
<b>Other Names</b>	
TAJ alpha; TAJ; TNFRSF19; TRADE; TROY;	
Isotype	Rabbit IgG
Host	Rabbit
Calculated MW	46015 Da

### TROY Antibody - Additional Information

Purification	Affinity-chromatography
Immunogen	A synthesized peptide derived from human TROY
Description	Can mediate activation of JNK and NF-kappa-B. May promote caspase-independent cell death.
Storage Condition and Buffer	Rabbit IgG in phosphate buffered saline , pH 7.4, 150mM NaCl, 0.02% sodium azide and 50% glycerol. Store at +4°C short term. Store at -20°C long term. Avoid freeze / thaw cycle.

### TROY Antibody - Protein Information

**Name** TNFRSF19

**Synonyms** TAJ, TROY

#### Function

Can mediate activation of JNK and NF-kappa-B. May promote caspase-independent cell death.

#### Cellular Location

Membrane; Single-pass type I membrane protein

#### Tissue Location

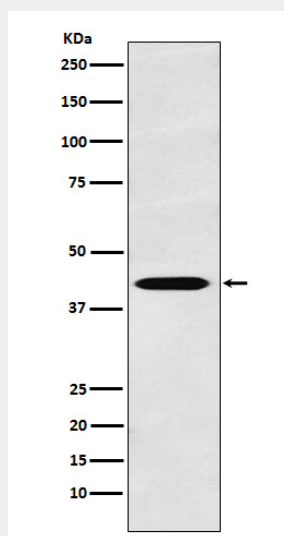
Highly expressed in prostate. Detected at lower levels in thymus, spleen, testis, uterus, small intestine, colon and peripheral blood leukocytes

## TROY Antibody - Protocols

Provided below are standard protocols that you may find useful for product applications.

- [Western Blot](#)
- [Blocking Peptides](#)
- [Dot Blot](#)
- [Immunohistochemistry](#)
- [Immunofluorescence](#)
- [Immunoprecipitation](#)
- [Flow Cytometry](#)
- [Cell Culture](#)

## TROY Antibody - Images



Western blot analysis of TROY expression in LnCaP cell lysate.