

IL32 Antibody
Rabbit mAb
Catalog # AP92580**Specification**

IL32 Antibody - Product Information

Application	WB
Primary Accession	P24001
Clonality	Monoclonal
Other Names	
IL 32alpha; IL 32beta; IL 32delta; IL 32gamma; IL32; NK4; TAIF; TAIFa; TAIFb; TAIFc; TAIFd;	
Isotype	Rabbit IgG
Host	Rabbit
Calculated MW	26676 Da

IL32 Antibody - Additional Information

Dilution	WB~~1:1000
Purification	Affinity-chromatography
Immunogen	A synthesized peptide derived from human IL32
Description	Cytokine that may play a role in innate and adaptive immune responses. It induces various cytokines such as TNFA/TNF-alpha and IL8. It activates typical cytokine signal pathways of NF-kappa-B and p38 MAPK.
Storage Condition and Buffer	Rabbit IgG in phosphate buffered saline , pH 7.4, 150mM NaCl, 0.02% sodium azide and 50% glycerol. Store at +4°C short term. Store at -20°C long term. Avoid freeze / thaw cycle.

IL32 Antibody - Protein Information**Name** IL32**Synonyms** NK4, TAIF**Function**

Cytokine that may play a role in innate and adaptive immune responses. It induces various cytokines such as TNFA/TNF-alpha and IL8. It activates typical cytokine signal pathways of NF-kappa-B and p38 MAPK.

Cellular Location

Secreted.

Tissue Location

Selectively expressed in lymphocytes. Expression is more prominent in immune cells than in

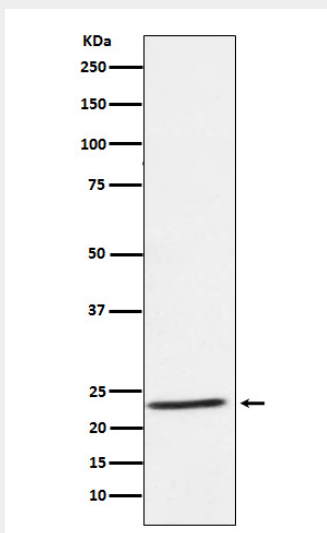
non-immune cells

IL32 Antibody - Protocols

Provided below are standard protocols that you may find useful for product applications.

- [Western Blot](#)
- [Blocking Peptides](#)
- [Dot Blot](#)
- [Immunohistochemistry](#)
- [Immunofluorescence](#)
- [Immunoprecipitation](#)
- [Flow Cytometry](#)
- [Cell Culture](#)

IL32 Antibody - Images



Western blot analysis of IL32 expression in Human tonsil lysate.