

**PRSS2 Antibody**  
**Rabbit mAb**  
**Catalog # AP92596****Specification**

---

**PRSS2 Antibody - Product Information**

|  |                        |
|--|------------------------|
| Application  | WB                     |
| Primary Accession  | <a href="#">P07478</a> |
| Reactivity   | Rat                    |
| Clonality  | Monoclonal             |
| <b>Other Names</b>   |                        |
| Pancreatic anionic trypsinogen; Protease, serine, 2; PRSS2; TRYP8; |                        |
| Isotype  | Rabbit IgG             |
| Host   | Rabbit                 |
| Calculated MW  | 26488 Da               |

**PRSS2 Antibody - Additional Information**

|                              |   |
|------------------------------|---|
| Dilution                     | WB~~1:1000  |
| Purification                 | Affinity-chromatography   |
| Immunogen                    | A synthesized peptide derived from human PRSS2  |
| Description                  | Trypsinogen has been shown to have certain intrinsic activity. It is usually considered, however, as the inactive precursor of trypsin which may be activated by removal of a terminal hexapeptide to yield single chain b trypsin. |
| Storage Condition and Buffer | Rabbit IgG in phosphate buffered saline , pH 7.4, 150mM NaCl, 0.02% sodium azide and 50% glycerol. Store at +4°C short term. Store at -20°C long term. Avoid freeze / thaw cycle.   |

**PRSS2 Antibody - Protein Information****Name** PRSS2**Synonyms** TRY2, TRYP2**Function**

In the ileum, may be involved in defensin processing, including DEFA5.

**Cellular Location**

Secreted, extracellular space.

**Tissue Location**

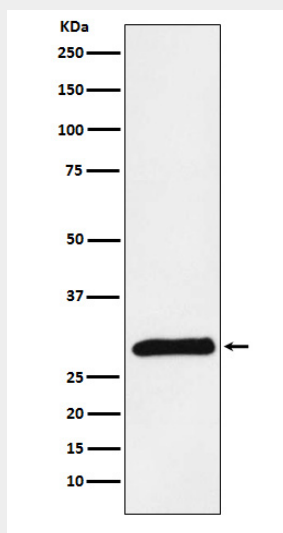
Expressed in Paneth cells, at the base of small intestinal crypts.

## PRSS2 Antibody - Protocols

Provided below are standard protocols that you may find useful for product applications.

- [Western Blot](#)
- [Blocking Peptides](#)
- [Dot Blot](#)
- [Immunohistochemistry](#)
- [Immunofluorescence](#)
- [Immunoprecipitation](#)
- [Flow Cytometry](#)
- [Cell Culture](#)

## PRSS2 Antibody - Images



Western blot analysis of PRSS2 expression in Human pancreas lysate.