

**ATP1A2 Antibody**  
**Rabbit mAb**  
**Catalog # AP92599****Specification**

---

**ATP1A2 Antibody - Product Information**

Application	WB
Primary Accession	<a href="#">P50993</a>
Reactivity	Rat
Clonality	Monoclonal
<b>Other Names</b>	
Atp1a2; FHM2; KIAA0778; MHP2;	
Isotype	Rabbit IgG
Host	Rabbit
Calculated MW	112265 Da

**ATP1A2 Antibody - Additional Information**

Dilution	WB~~1:1000
Purification	Affinity-chromatography
Immunogen	A synthesized peptide derived from human ATP1A2
Description	This is the catalytic component of the active enzyme, which catalyzes the hydrolysis of ATP coupled with the exchange of sodium and potassium ions across the plasma membrane. This action creates the electrochemical gradient of sodium and potassium, providing the energy for active transport of various nutrients.
Storage Condition and Buffer	Rabbit IgG in phosphate buffered saline , pH 7.4, 150mM NaCl, 0.02% sodium azide and 50% glycerol. Store at +4°C short term. Store at -20°C long term. Avoid freeze / thaw cycle.

**ATP1A2 Antibody - Protein Information****Name** ATP1A2**Synonyms** KIAA0778**Function**

This is the catalytic component of the active enzyme, which catalyzes the hydrolysis of ATP coupled with the exchange of sodium and potassium ions across the plasma membrane. This action creates the electrochemical gradient of sodium and potassium, providing the energy for active transport of various nutrients.

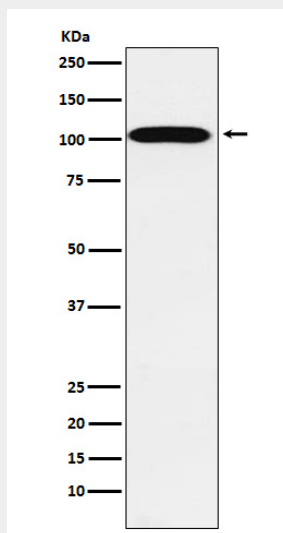
**Cellular Location**

Membrane; Multi-pass membrane protein. Cell membrane; Multi-pass membrane protein

**ATP1A2 Antibody - Protocols**

Provided below are standard protocols that you may find useful for product applications.

- [Western Blot](#)
- [Blocking Peptides](#)
- [Dot Blot](#)
- [Immunohistochemistry](#)
- [Immunofluorescence](#)
- [Immunoprecipitation](#)
- [Flow Cytometry](#)
- [Cell Culture](#)

**ATP1A2 Antibody - Images**

Western blot analysis of ATP1A2 expression in Human fetal heart lysate.