

**GJB1 Antibody**  
**Rabbit mAb**  
**Catalog # AP92610**

## Specification

---

### GJB1 Antibody - Product Information

Application	WB, IHC, FC
Primary Accession	<a href="#">P08034</a>
Clonality	Monoclonal
<b>Other Names</b>	
CMTX; CMTX1; Connexin32; Cx32; GJB1;	
Isotype	Rabbit IgG
Host	Rabbit
Calculated MW	32025 Da

### GJB1 Antibody - Additional Information

Dilution	WB~~1:1000 IHC~~1:100~500 FC~~1:10~50
Purification	Affinity-chromatography
Immunogen	A synthesized peptide derived from human GJB1
Description	One gap junction consists of a cluster of closely packed pairs of transmembrane channels, the connexons, through which materials of low MW diffuse from one cell to a neighboring cell.
Storage Condition and Buffer	Rabbit IgG in phosphate buffered saline , pH 7.4, 150mM NaCl, 0.02% sodium azide and 50% glycerol. Store at +4°C short term. Store at -20°C long term. Avoid freeze / thaw cycle.

### GJB1 Antibody - Protein Information

**Name** GJB1

**Synonyms** CX32

#### Function

One gap junction consists of a cluster of closely packed pairs of transmembrane channels, the connexons, through which materials of low MW diffuse from one cell to a neighboring cell.

#### Cellular Location

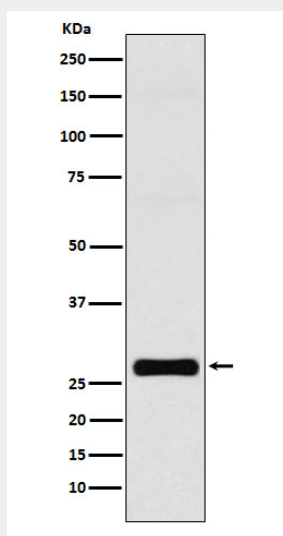
Cell membrane; Multi-pass membrane protein. Cell junction, gap junction

## GJB1 Antibody - Protocols

Provided below are standard protocols that you may find useful for product applications.

- [Western Blot](#)
- [Blocking Peptides](#)
- [Dot Blot](#)
- [Immunohistochemistry](#)
- [Immunofluorescence](#)
- [Immunoprecipitation](#)
- [Flow Cytometry](#)
- [Cell Culture](#)

## GJB1 Antibody - Images



Western blot analysis of GJB1 expression in MCF-7 cell lysate.