

mGluR3 Antibody
Rabbit mAb
Catalog # AP92617

Specification

mGluR3 Antibody - Product Information

Application	WB
Primary Accession	Q14832
Reactivity	Rat
Clonality	Monoclonal
Other Names	
GLUR3; GPRC1C; GRM3; MGlu3; mGluR3;	
Isotype	Rabbit IgG
Host	Rabbit
Calculated MW	98879 Da

mGluR3 Antibody - Additional Information

Dilution	WB~~1:1000
Purification	Affinity-chromatography
Immunogen	A synthesized peptide derived from human mGluR3
Description	Receptor for glutamate. The activity of this receptor is mediated by a G-protein that inhibits adenylate cyclase activity.
Storage Condition and Buffer	Rabbit IgG in phosphate buffered saline , pH 7.4, 150mM NaCl, 0.02% sodium azide and 50% glycerol. Store at +4°C short term. Store at -20°C long term. Avoid freeze / thaw cycle.

mGluR3 Antibody - Protein Information

Name GRM3

Synonyms GPRC1C, MGLUR3

Function

G-protein coupled receptor for glutamate. Ligand binding causes a conformation change that triggers signaling via guanine nucleotide-binding proteins (G proteins) and modulates the activity of down-stream effectors. Signaling inhibits adenylate cyclase activity.

Cellular Location

Cell membrane; Multi-pass membrane protein

Tissue Location

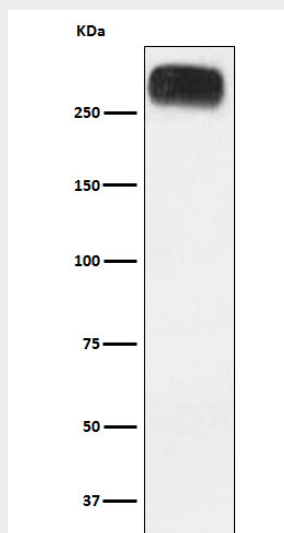
Detected in brain cortex, thalamus, subthalamic nucleus, substantia nigra, hypothalamus, hippocampus, corpus callosum, caudate nucleus and amygdala.

mGluR3 Antibody - Protocols

Provided below are standard protocols that you may find useful for product applications.

- [Western Blot](#)
- [Blocking Peptides](#)
- [Dot Blot](#)
- [Immunohistochemistry](#)
- [Immunofluorescence](#)
- [Immunoprecipitation](#)
- [Flow Cytometry](#)
- [Cell Culture](#)

mGluR3 Antibody - Images



Western blot analysis of mGluR3 expression in Human cerebellum lysate.