

**LHX2 Antibody**  
**Rabbit mAb**  
**Catalog # AP92622**

## Specification

---

### LHX2 Antibody - Product Information

Application	WB
Primary Accession	<a href="#">P50458</a>
Reactivity	Rat
Clonality	Monoclonal
<b>Other Names</b>	
hLhx2; LH2; LHX2; LIM homeobox 2;	
Isotype	Rabbit IgG
Host	Rabbit
Calculated MW	44373 Da

### LHX2 Antibody - Additional Information

Dilution	WB~~1:1000
Purification	Affinity-chromatography
Immunogen	A synthesized peptide derived from human LHX2
Description	Acts as a transcriptional activator. Stimulates the promoter of the alpha-glycoprotein gene. Transcriptional regulatory protein involved in the control of cell differentiation in developing lymphoid and neural cell types.
Storage Condition and Buffer	Rabbit IgG in phosphate buffered saline , pH 7.4, 150mM NaCl, 0.02% sodium azide and 50% glycerol. Store at +4°C short term. Store at -20°C long term. Avoid freeze / thaw cycle.

### LHX2 Antibody - Protein Information

**Name** LHX2

**Synonyms** LH2

#### Function

Acts as a transcriptional activator. Stimulates the promoter of the alpha-glycoprotein gene. Transcriptional regulatory protein involved in the control of cell differentiation in developing lymphoid and neural cell types (By similarity).

#### Cellular Location

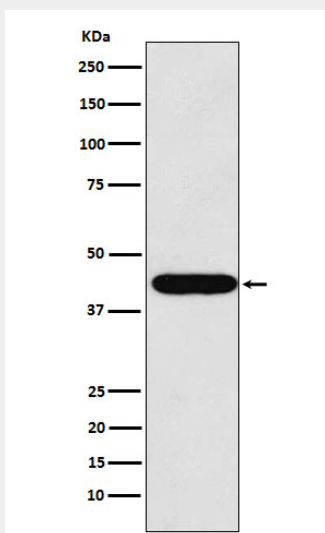
Nucleus.

## LHX2 Antibody - Protocols

Provided below are standard protocols that you may find useful for product applications.

- [Western Blot](#)
- [Blocking Peptides](#)
- [Dot Blot](#)
- [Immunohistochemistry](#)
- [Immunofluorescence](#)
- [Immunoprecipitation](#)
- [Flow Cytometry](#)
- [Cell Culture](#)

## LHX2 Antibody - Images



Western blot analysis of LHX2 expression in HeLa cell lysate.