

CD1c Antibody
Rabbit mAb
Catalog # AP92623**Specification**

CD1c Antibody - Product Information

Application	WB
Primary Accession	P29017
Clonality	Monoclonal
Other Names	
BDCA1; CD1; CD1A; CD1c;	
Isotype	Rabbit IgG
Host	Rabbit
Calculated MW	37654 Da

CD1c Antibody - Additional Information

Dilution	WB~~1:1000
Purification	Affinity-chromatography
Immunogen	A synthesized peptide derived from human CD1c
Description	Antigen-presenting protein that binds self and non-self lipid and glycolipid antigens and presents them to T-cell receptors on natural killer T-cells.
Storage Condition and Buffer	Rabbit IgG in phosphate buffered saline , pH 7.4, 150mM NaCl, 0.02% sodium azide and 50% glycerol. Store at +4°C short term. Store at -20°C long term. Avoid freeze / thaw cycle.

CD1c Antibody - Protein Information**Name** CD1C**Function**

Antigen-presenting protein that binds self and non-self lipid and glycolipid antigens and presents them to T-cell receptors on natural killer T-cells.

Cellular Location

Cell membrane; Single-pass type I membrane protein. Endosome membrane; Single-pass type I membrane protein Lysosome. Note=Subject to intracellular trafficking between the cell membrane and endosomes

Tissue Location

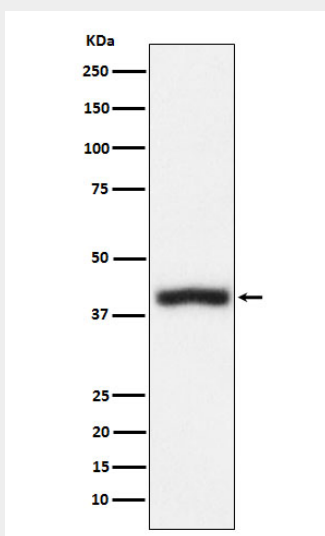
Expressed on cortical thymocytes, on certain T-cell leukemias, and in various other tissues

CD1c Antibody - Protocols

Provided below are standard protocols that you may find useful for product applications.

- [Western Blot](#)
- [Blocking Peptides](#)
- [Dot Blot](#)
- [Immunohistochemistry](#)
- [Immunofluorescence](#)
- [Immunoprecipitation](#)
- [Flow Cytometry](#)
- [Cell Culture](#)

CD1c Antibody - Images



Western blot analysis of CD1c expression in Jurkat cell lysate.