

PAG Antibody
Rabbit mAb
Catalog # AP92628

Specification

PAG Antibody - Product Information

Application	WB, IHC, FC, IP
Primary Accession	O9NWQ8
Reactivity	Rat
Clonality	Monoclonal
Other Names	
CBP; Csk binding protein; PAG; PAG1;	

Isotype	Rabbit IgG
Host	Rabbit
Calculated MW	46981 Da

PAG Antibody - Additional Information

Dilution	WB~~1:1000 IHC~~1:100~500 FC~~1:10~50 IP~~N/A
Purification	Affinity-chromatography
Immunogen	A synthesized peptide derived from human PAG
Description	Negatively regulates TCR (T-cell antigen receptor)-mediated signaling in T-cells and FCER1 (high affinity immunoglobulin epsilon receptor)-mediated signaling in mast cells. Promotes CSK activation and recruitment to lipid rafts, which results in LCK inhibition. Inhibits immunological synapse formation by preventing dynamic arrangement of lipid raft proteins.
Storage Condition and Buffer	Rabbit IgG in phosphate buffered saline , pH 7.4, 150mM NaCl, 0.02% sodium azide and 50% glycerol. Store at +4°C short term. Store at -20°C long term. Avoid freeze / thaw cycle.

PAG Antibody - Protein Information

Name PAG1

Synonyms CBP, PAG

Function

Negatively regulates TCR (T-cell antigen receptor)-mediated signaling in T-cells and FCER1 (high

affinity immunoglobulin epsilon receptor)-mediated signaling in mast cells. Promotes CSK activation and recruitment to lipid rafts, which results in LCK inhibition. Inhibits immunological synapse formation by preventing dynamic arrangement of lipid raft proteins. May be involved in cell adhesion signaling.

Cellular Location

Cell membrane; Single-pass type III membrane protein Note=Present in lipid rafts

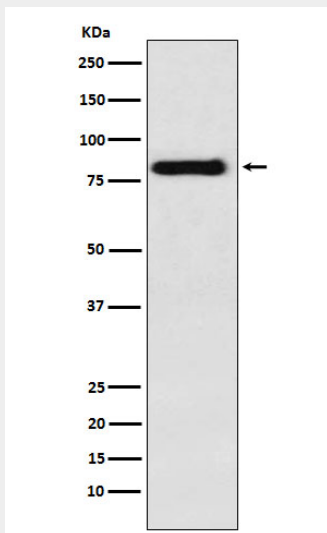
Tissue Location

Ubiquitously expressed. Present in germinal center B-cells, plasma cells, T-cells, monocytes and platelets (at protein level).

PAG Antibody - Protocols

Provided below are standard protocols that you may find useful for product applications.

- [Western Blot](#)
- [Blocking Peptides](#)
- [Dot Blot](#)
- [Immunohistochemistry](#)
- [Immunofluorescence](#)
- [Immunoprecipitation](#)
- [Flow Cytometry](#)
- [Cell Culture](#)

PAG Antibody - Images

Western blot analysis of PAG expression in Raji cell lysate.