

AP1G1 Antibody
Rabbit mAb
Catalog # AP92629

Specification

AP1G1 Antibody - Product Information

Application	WB, IHC
Primary Accession	O43747
Reactivity	Rat
Clonality	Monoclonal
Other Names	
ADTG; AP1G1; CLAPG1;	
Isotype	Rabbit IgG
Host	Rabbit
Calculated MW	91351 Da

AP1G1 Antibody - Additional Information

Dilution	WB~~1:1000 IHC~~1:100~500
Purification	Affinity-chromatography
Immunogen	A synthesized peptide derived from human AP1G1
Description	Subunit of clathrin-associated adaptor protein complex 1 that plays a role in protein sorting in the late-Golgi/trans-Golgi network (TGN) and/or endosomes. The AP complexes mediate both the recruitment of clathrin to membranes and the recognition of sorting signals within the cytosolic tails of transmembrane cargo molecules.
Storage Condition and Buffer	Rabbit IgG in phosphate buffered saline , pH 7.4, 150mM NaCl, 0.02% sodium azide and 50% glycerol. Store at +4°C short term. Store at -20°C long term. Avoid freeze / thaw cycle.

AP1G1 Antibody - Protein Information

Name AP1G1

Synonyms ADTG, CLAPG1

Function

Subunit of clathrin-associated adaptor protein complex 1 that plays a role in protein sorting in the late-Golgi/trans-Golgi network (TGN) and/or endosomes. The AP complexes mediate both the recruitment of clathrin to membranes and the recognition of sorting signals within the cytosolic tails of transmembrane cargo molecules. In association with AFTPH/aftiphilin in the

aftiphilin/p200/gamma-synergin complex, involved in the trafficking of transferrin from early to recycling endosomes, and the membrane trafficking of furin and the lysosomal enzyme cathepsin D between the trans-Golgi network (TGN) and endosomes (PubMed:15758025).

Cellular Location

Golgi apparatus. Cytoplasmic vesicle, clathrin-coated vesicle membrane; Peripheral membrane protein; Cytoplasmic side. Cytoplasm Cytoplasm, perinuclear region. Cytoplasmic vesicle, clathrin-coated vesicle. Membrane, clathrin-coated pit. Note=Component of the coat surrounding the cytoplasmic face of coated vesicles located at the Golgi complex (PubMed:12773381). Co-localizes with AFTPH/aftiphilin in the cytoplasm (PubMed:15758025).

Tissue Location

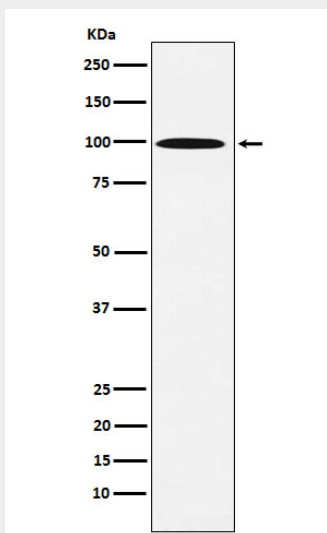
Widely expressed.

AP1G1 Antibody - Protocols

Provided below are standard protocols that you may find useful for product applications.

- [Western Blot](#)
- [Blocking Peptides](#)
- [Dot Blot](#)
- [Immunohistochemistry](#)
- [Immunofluorescence](#)
- [Immunoprecipitation](#)
- [Flow Cytometry](#)
- [Cell Culture](#)

AP1G1 Antibody - Images



Western blot analysis of AP1G1 expression in 293T cell lysate.