

**NUP62 Antibody**  
**Rabbit mAb**  
**Catalog # AP92630****Specification**

---

**NUP62 Antibody - Product Information**

Application	<b>WB</b>
Primary Accession	<a href="#">P37198</a>
Clonality	<b>Monoclonal</b>
<b>Other Names</b>	
IBSN; MGC841; NUP62; p62; SNDI;	
Isotype	<b>Rabbit IgG</b>
Host	<b>Rabbit</b>
Calculated MW	<b>53255 Da</b>

**NUP62 Antibody - Additional Information**

Dilution	<b>WB~~1:1000</b>
Purification	<b>Affinity-chromatography</b>
Immunogen	<b>A synthesized peptide derived from human NUP62</b>
Description	<b>The nuclear pore complex is a structure that extends across the nuclear envelope and regulates the flow of macromolecules between the cytoplasm and the nucleus. Nucleoporins are the main components of the nuclear pore complex in eukaryotic cells.</b>
Storage Condition and Buffer	<b>Rabbit IgG in phosphate buffered saline , pH 7.4, 150mM NaCl, 0.02% sodium azide and 50% glycerol. Store at +4°C short term. Store at -20°C long term. Avoid freeze / thaw cycle.</b>

**NUP62 Antibody - Protein Information****Name** NUP62**Function**

Essential component of the nuclear pore complex (PubMed:<a href="http://www.uniprot.org/citations/1915414" target="\_blank">1915414</a>). The N-terminal is probably involved in nucleocytoplasmic transport (PubMed:<a href="http://www.uniprot.org/citations/1915414" target="\_blank">1915414</a>). The C-terminal is involved in protein-protein interaction probably via coiled-coil formation, promotes its association with centrosomes and may function in anchorage of p62 to the pore complex (PubMed:<a href="http://www.uniprot.org/citations/1915414" target="\_blank">1915414</a>, PubMed:<a href="http://www.uniprot.org/citations/24107630" target="\_blank">24107630</a>). Plays a role in mitotic cell cycle progression by regulating centrosome segregation, centriole

maturation and spindle orientation (PubMed:<a href="http://www.uniprot.org/citations/24107630" target="\_blank">24107630</a>). It might be involved in protein recruitment to the centrosome after nuclear breakdown (PubMed:<a href="http://www.uniprot.org/citations/24107630" target="\_blank">24107630</a>).

#### Cellular Location

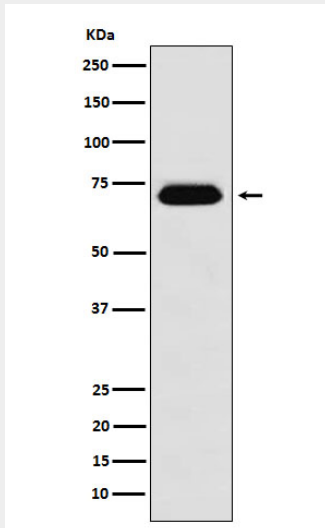
Nucleus, nuclear pore complex. Cytoplasm, cytoskeleton, spindle pole. Nucleus envelope. Cytoplasm, cytoskeleton, microtubule organizing center, centrosome. Note=Central region of the nuclear pore, within the transporter (PubMed:1915414). During mitotic cell division, it associates with the poles of the mitotic spindle (PubMed:24107630)

#### NUP62 Antibody - Protocols

Provided below are standard protocols that you may find useful for product applications.

- [Western Blot](#)
- [Blocking Peptides](#)
- [Dot Blot](#)
- [Immunohistochemistry](#)
- [Immunofluorescence](#)
- [Immunoprecipitation](#)
- [Flow Cytometry](#)
- [Cell Culture](#)

#### NUP62 Antibody - Images



Western blot analysis of NUP62 expression in Raji cell lysate.