

**CC2D1A Antibody**  
**Rabbit mAb**  
**Catalog # AP92634****Specification**

---

**CC2D1A Antibody - Product Information**

|   |                        |
|---|------------------------|
| Application   | WB, FC, ICC            |
| Primary Accession   | <a href="#">Q6P1N0</a> |
| Reactivity  | Rat                    |
| Clonality   | Monoclonal             |
| <b>Other Names</b>  |                        |
| Coiled coil and C2 domain containing 1A; FREUD 1; Freud 1/Aki1; MRT3; |                        |
| Isotype   | Rabbit IgG             |
| Host  | Rabbit                 |
| Calculated MW   | 104062 Da              |

**CC2D1A Antibody - Additional Information**

|                              |   |
|------------------------------|---|
| Dilution                     | WB~~1:1000<br>FC~~1:10~50<br>ICC~~N/A   |
| Purification                 | Affinity-chromatography   |
| Immunogen                    | A synthesized peptide derived from human CC2D1A   |
| Description                  | May play a role in the altered regulation of HTR1A associated with anxiety and major depression. It also mediates HDAC-independent repression of HTR1A promoter in neuronal cell. |
| Storage Condition and Buffer | Rabbit IgG in phosphate buffered saline , pH 7.4, 150mM NaCl, 0.02% sodium azide and 50% glycerol. Store at +4°C short term. Store at -20°C long term. Avoid freeze / thaw cycle. |

**CC2D1A Antibody - Protein Information****Name** CC2D1A**Synonyms** AKI1, LGD2 {ECO:0000305}**Function**

Transcription factor that binds specifically to the DRE (dual repressor element) and represses HTR1A gene transcription in neuronal cells. The combination of calcium and ATP specifically inactivates the binding with FRE. May play a role in the altered regulation of HTR1A associated with anxiety and major depression. Mediates HDAC-independent repression of HTR1A promoter in neuronal cell. Performs essential function in controlling functional maturation of synapses (By similarity). Plays distinct roles depending on its localization. When cytoplasmic, acts as a scaffold

protein in the PI3K/PDK1/AKT pathway. Repressor of HTR1A when nuclear. In the centrosome, regulates spindle pole localization of the cohesin subunit SCC1/RAD21, thereby mediating centriole cohesion during mitosis.

#### Cellular Location

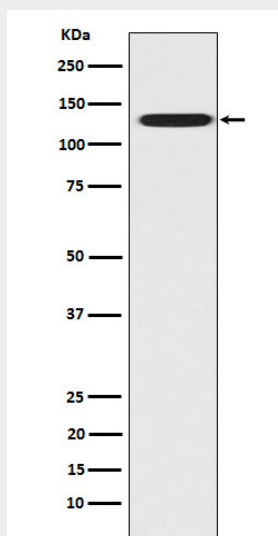
Cytoplasm. Nucleus {ECO:0000250|UniProtKB:Q66HA5}. Cytoplasm, cytoskeleton, microtubule organizing center, centrosome

#### CC2D1A Antibody - Protocols

Provided below are standard protocols that you may find useful for product applications.

- [Western Blot](#)
- [Blocking Peptides](#)
- [Dot Blot](#)
- [Immunohistochemistry](#)
- [Immunofluorescence](#)
- [Immunoprecipitation](#)
- [Flow Cytometry](#)
- [Cell Culture](#)

#### CC2D1A Antibody - Images



Western blot analysis of CC2D1A expression in HeLa cell lysate.