

EHMT2 Antibody
Rabbit mAb
Catalog # AP92640

Specification

EHMT2 Antibody - Product Information

Application **WB, IHC, FC, ICC, IP**
Primary Accession [O96KQ7](#)
Reactivity **Rat**
Clonality **Monoclonal**

Other Names

Bat8; Ehmt2; Euchromatic histone lysine methyltransferase 2; G9a protein; GAT8; Histone H3 K9 methyltransferase 3; NG36;

Isotype **Rabbit IgG**
Host **Rabbit**
Calculated MW **132370 Da**

EHMT2 Antibody - Additional Information

Dilution **WB~~1:1000**
IHC~~1:100~500
FC~~1:10~50
ICC~~N/A
IP~~N/A

Purification **Affinity-chromatography**
Immunogen **A synthesized peptide derived from EHMT2**
Description **Histone methyltransferase that specifically mono- and dimethylates 'Lys-9' of histone H3 (H3K9me1 and H3K9me2, respectively) in euchromatin. H3K9me represents a specific tag for epigenetic transcriptional repression by recruiting HP1 proteins to methylated histones.**

Storage Condition and Buffer **Rabbit IgG in phosphate buffered saline , pH 7.4, 150mM NaCl, 0.02% sodium azide and 50% glycerol. Store at +4°C short term. Store at -20°C long term. Avoid freeze / thaw cycle.**

EHMT2 Antibody - Protein Information

Name EHMT2

Synonyms BAT8, C6orf30, G9A, KMT1C, NG36

Function

Histone methyltransferase that specifically mono- and dimethylates 'Lys-9' of histone H3 (H3K9me1 and H3K9me2, respectively) in euchromatin. H3K9me represents a specific tag for

epigenetic transcriptional repression by recruiting HP1 proteins to methylated histones. Also mediates monomethylation of 'Lys-56' of histone H3 (H3K56me1) in G1 phase, leading to promote interaction between histone H3 and PCNA and regulating DNA replication. Also weakly methylates 'Lys-27' of histone H3 (H3K27me). Also required for DNA methylation, the histone methyltransferase activity is not required for DNA methylation, suggesting that these 2 activities function independently. Probably targeted to histone H3 by different DNA-binding proteins like E2F6, MGA, MAX and/or DP1. May also methylate histone H1. In addition to the histone methyltransferase activity, also methylates non-histone proteins: mediates dimethylation of 'Lys-373' of p53/TP53. Also methylates CDYL, WIZ, ACIN1, DNMT1, HDAC1, ERCC6, KLF12 and itself.

Cellular Location

Nucleus. Chromosome. Note=Associates with euchromatic regions (PubMed:11316813). Does not associate with heterochromatin (PubMed:11316813).

Tissue Location

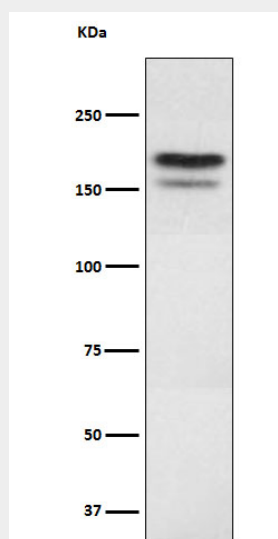
Expressed in all tissues examined, with high levels in fetal liver, thymus, lymph node, spleen and peripheral blood leukocytes and lower level in bone marrow

EHMT2 Antibody - Protocols

Provided below are standard protocols that you may find useful for product applications.

- [Western Blot](#)
- [Blocking Peptides](#)
- [Dot Blot](#)
- [Immunohistochemistry](#)
- [Immunofluorescence](#)
- [Immunoprecipitation](#)
- [Flow Cytometry](#)
- [Cell Culture](#)

EHMT2 Antibody - Images



Western blot analysis of EHMT2 expression in 293 cell lysate.