

**Themis Antibody**  
**Rabbit mAb**  
**Catalog # AP92662****Specification**

---

**Themis Antibody - Product Information**

Application	WB, FC, ICC, IP
Primary Accession	<a href="#">Q8N1K5</a>
Reactivity	Rat
Clonality	Monoclonal
<b>Other Names</b>	
Protein THEMIS; SPOT; THEMIS; TSEPA;	

Isotype	Rabbit IgG
Host	Rabbit
Calculated MW	73452 Da

**Themis Antibody - Additional Information**

Dilution	WB~~1:1000 FC~~1:10~50 ICC~~N/A IP~~N/A
Purification	Affinity-chromatography
Immunogen	A synthesized peptide derived from Themis
Description	Plays a central role in late thymocyte development by controlling both positive and negative T-cell selection. Required to sustain and/or integrate signals required for proper lineage commitment and maturation of T-cells.
Storage Condition and Buffer	Rabbit IgG in phosphate buffered saline , pH 7.4, 150mM NaCl, 0.02% sodium azide and 50% glycerol. Store at +4°C short term. Store at -20°C long term. Avoid freeze / thaw cycle.

**Themis Antibody - Protein Information****Name** THEMIS**Synonyms** C6orf190, C6orf207**Function**

Plays a central role in late thymocyte development by controlling both positive and negative T-cell selection. Required to sustain and/or integrate signals required for proper lineage commitment and maturation of T-cells. Regulates T-cell development through T-cell antigen receptor (TCR) signaling and in particular through the regulation of calcium influx and phosphorylation of Erk.

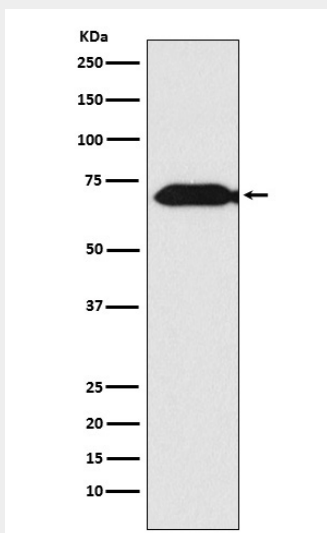
**Cellular Location**

Cytoplasm {ECO:0000250|UniProtKB:Q8BGW0}. Nucleus {ECO:0000250|UniProtKB:Q8BGW0}

**Themis Antibody - Protocols**

Provided below are standard protocols that you may find useful for product applications.

- [Western Blot](#)
- [Blocking Peptides](#)
- [Dot Blot](#)
- [Immunohistochemistry](#)
- [Immunofluorescence](#)
- [Immunoprecipitation](#)
- [Flow Cytometry](#)
- [Cell Culture](#)

**Themis Antibody - Images**

Western blot analysis of Themis expression in Jurkat cell lysate.