

**UBE4B Antibody**  
**Rabbit mAb**  
**Catalog # AP92663****Specification**

---

**UBE4B Antibody - Product Information**

Application	WB
Primary Accession	<a href="#">O95155</a>
Reactivity	Rat
Clonality	Monoclonal
<b>Other Names</b>	
HDNB1; Ube4b; UBOX3; UFD2; UFD2a; Ufd2p;	
Isotype	Rabbit IgG
Host	Rabbit
Calculated MW	146185 Da

**UBE4B Antibody - Additional Information**

Dilution	WB~~1:1000
Purification	Affinity-chromatography
Immunogen	A synthesized peptide derived from UBE4B
Description	Binds to the ubiquitin moieties of preformed conjugates and catalyzes ubiquitin chain assembly in conjunction with E1, E2, and E3.
Storage Condition and Buffer	Rabbit IgG in phosphate buffered saline , pH 7.4, 150mM NaCl, 0.02% sodium azide and 50% glycerol. Store at +4°C short term. Store at -20°C long term. Avoid freeze / thaw cycle.

**UBE4B Antibody - Protein Information****Name** UBE4B ([HGNC:12500](#))**Function**

Ubiquitin-protein ligase that probably functions as an E3 ligase in conjunction with specific E1 and E2 ligases (By similarity). May also function as an E4 ligase mediating the assembly of polyubiquitin chains on substrates ubiquitinated by another E3 ubiquitin ligase (By similarity). May regulate myosin assembly in striated muscles together with STUB1 and VCP/p97 by targeting myosin chaperone UNC45B for proteasomal degradation (PubMed:<a href="http://www.uniprot.org/citations/17369820" target="\_blank">17369820</a>).

**Cellular Location**

Cytoplasm. Nucleus {ECO:0000250|UniProtKB:Q9ES00}

**Tissue Location**

Expressed in differentiated myotubes (at protein level) (PubMed:17369820). Highest expression in

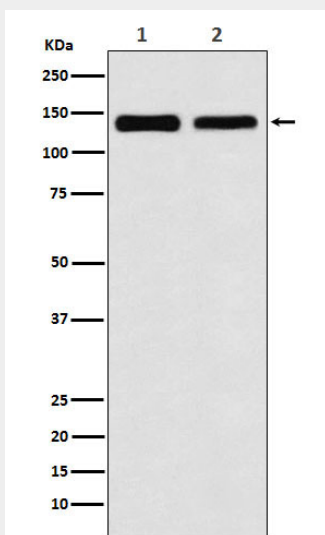
ovary, testis, heart and skeletal muscle (PubMed:11802788). Expression is low in colon, thymus and peripheral blood leukocytes (PubMed:11802788). Almost undetectable in lung and spleen (PubMed:11802788)

### UBE4B Antibody - Protocols

Provided below are standard protocols that you may find useful for product applications.

- [Western Blot](#)
- [Blocking Peptides](#)
- [Dot Blot](#)
- [Immunohistochemistry](#)
- [Immunofluorescence](#)
- [Immunoprecipitation](#)
- [Flow Cytometry](#)
- [Cell Culture](#)

### UBE4B Antibody - Images



Western blot analysis of UBE4B expression in (1) 293T cell lysate; (2) NIH/3T3 cell lysate.