

SerpinB3 Antibody
Rabbit mAb
Catalog # AP92668**Specification**

SerpinB3 Antibody - Product Information

Application	WB, IHC, ICC
Primary Accession	P29508
Clonality	Monoclonal
Other Names	
SCC; SCCA; SCCA1; SERPINB3; T4A;	
Isotype	Rabbit IgG
Host	Rabbit
Calculated MW	44565 Da

SerpinB3 Antibody - Additional Information

Dilution	WB~~1:1000 IHC~~1:100~500 ICC~~N/A
Purification	Affinity-chromatography
Immunogen	A synthesized peptide derived from SerpinB3
Description	May act as a protease inhibitor to modulate the host immune response against tumor cells.
Storage Condition and Buffer	Rabbit IgG in phosphate buffered saline , pH 7.4, 150mM NaCl, 0.02% sodium azide and 50% glycerol. Store at +4°C short term. Store at -20°C long term. Avoid freeze / thaw cycle.

SerpinB3 Antibody - Protein Information**Name** SERPINB3**Synonyms** SCCA, SCCA1**Function**

May act as a papain-like cysteine protease inhibitor to modulate the host immune response against tumor cells. Also functions as an inhibitor of UV-induced apoptosis via suppression of the activity of c-Jun NH(2)-terminal kinase (JNK1).

Cellular Location

Cytoplasm. Note=Seems to also be secreted in plasma by cancerous cells but at a low level

Tissue Location

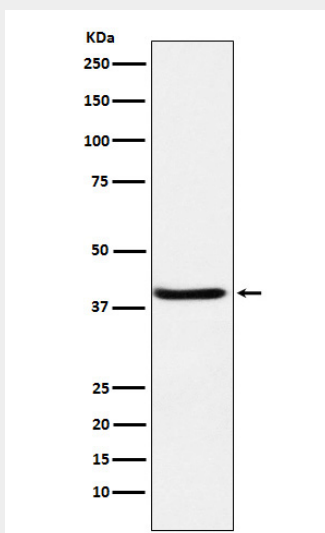
Squamous cells. Expressed in some hepatocellular carcinoma (at protein level).

SerpinB3 Antibody - Protocols

Provided below are standard protocols that you may find useful for product applications.

- [Western Blot](#)
- [Blocking Peptides](#)
- [Dot Blot](#)
- [Immunohistochemistry](#)
- [Immunofluorescence](#)
- [Immunoprecipitation](#)
- [Flow Cytometry](#)
- [Cell Culture](#)

SerpinB3 Antibody - Images



Western blot analysis of SerpinB3 expression in A431 cell lysate.