

UBE2B Antibody
Rabbit mAb
Catalog # AP92673

Specification

UBE2B Antibody - Product Information

| | |
|----------------------------------|------------------------|
| Application | WB, IHC, ICC |
| Primary Accession | P63146 |
| Clonality | Monoclonal |
| Other Names | |
| hHR6B; HR6B; RAD6B; UBC2; UBE2B; | |
| Isotype | Rabbit IgG |
| Host | Rabbit |
| Calculated MW | 17312 Da |

UBE2B Antibody - Additional Information

| | |
|------------------------------|--|
| Dilution | WB~~1:1000 IHC~~1:100~500 ICC~~N/A |
| Purification | Affinity-chromatography |
| Immunogen | A synthesized peptide derived from UBE2B |
| Description | Accepts ubiquitin from the E1 complex and catalyzes its covalent attachment to other proteins. In association with the E3 enzyme BRE1 (RNF20 and/or RNF40), it plays a role in transcription regulation by catalyzing the monoubiquitination of histone H2B at 'Lys-120' to form H2BK120ub1. |
| Storage Condition and Buffer | Rabbit IgG in phosphate buffered saline , pH 7.4, 150mM NaCl, 0.02% sodium azide and 50% glycerol. Store at +4°C short term. Store at -20°C long term. Avoid freeze / thaw cycle. |

UBE2B Antibody - Protein Information

Name UBE2B ([HGNC:12473](#))

Function

E2 ubiquitin-conjugating enzyme that accepts ubiquitin from the ubiquitin-activating enzyme E1 and transfers it to a E3 ubiquitin- protein ligase (PubMed:16337599, PubMed:17108083, PubMed:17130289, PubMed:1717990, PubMed:20061386). In vitro

catalyzes 'Lys-11'-, as well as 'Lys-48'- and 'Lys-63'-linked polyubiquitination (PubMed:20061386). Together with the E3 enzyme BRE1 (RNF20 and/or RNF40), plays a role in transcription regulation by catalyzing the monoubiquitination of histone H2B at 'Lys-120' to form H2BK120ub1 (PubMed:16337599). H2BK120ub1 gives a specific tag for epigenetic transcriptional activation, elongation by RNA polymerase II, telomeric silencing, and is also a prerequisite for H3K4me and H3K79me formation (PubMed:16337599). May play a role in DNA repair (PubMed:8062904). Associates to the E3 ligase RAD18 to form the UBE2B-RAD18 ubiquitin ligase complex involved in mono-ubiquitination of DNA-associated PCNA on 'Lys-164' (PubMed:17108083, PubMed:17130289). In association with the E3 enzyme UBR4, is involved in N-end rule-dependent protein degradation (PubMed:38182926). May be involved in neurite outgrowth (By similarity).

Cellular Location

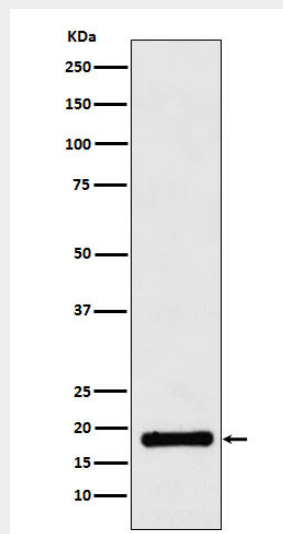
Cell membrane {ECO:0000250|UniProtKB:P63149}. Nucleus {ECO:0000250|UniProtKB:P63149}. Note=In peripheral neurons, expressed both at the plasma membrane and in nuclei {ECO:0000250|UniProtKB:P63149}

UBE2B Antibody - Protocols

Provided below are standard protocols that you may find useful for product applications.

- [Western Blot](#)
- [Blocking Peptides](#)
- [Dot Blot](#)
- [Immunohistochemistry](#)
- [Immunofluorescence](#)
- [Immunoprecipitation](#)
- [Flow Cytometry](#)
- [Cell Culture](#)

UBE2B Antibody - Images



Western blot analysis of UBE2B expression in Jurkat cell lysate.