

Fibronectin Antibody
Rabbit mAb
Catalog # AP92682**Specification**

Fibronectin Antibody - Product Information

Application	WB, FC, ICC
Primary Accession	P02751
Reactivity	Rat
Clonality	Monoclonal

Other Names

CIG; Cold insoluble globulin; Fibronectin 1; FINC; FN; FN1; FNZ; GFND; GFND2; LETS; Migration stimulating factor; MSF;

Isotype	Rabbit IgG
Host	Rabbit
Calculated MW	272320 Da

Fibronectin Antibody - Additional Information

Dilution	WB~~1:1000 FC~~1:10~50 ICC~~N/A
Purification	Affinity-chromatography
Immunogen	A synthesized peptide derived from human Fibronectin
Description	Fibronectins bind cell surfaces and various compounds including collagen, fibrin, heparin, DNA, and actin. Fibronectins are involved in cell adhesion, cell motility, opsonization, wound healing, and maintenance of cell shape. Involved in osteoblast compaction through the fibronectin fibrillogenesis cell-mediated matrix assembly process, essential for osteoblast mineralization.
Storage Condition and Buffer	Rabbit IgG in phosphate buffered saline , pH 7.4, 150mM NaCl, 0.02% sodium azide and 50% glycerol. Store at +4°C short term. Store at -20°C long term. Avoid freeze / thaw cycle.

Fibronectin Antibody - Protein Information

Name FN1 ([HGNC:3778](#))

Synonyms FN

Function

Fibronectins bind cell surfaces and various compounds including collagen, fibrin, heparin, DNA, and actin (PubMed:3024962, PubMed:3593230, PubMed:3900070, PubMed:7989369). Fibronectins are involved in cell adhesion, cell motility, opsonization, wound healing, and maintenance of cell shape (PubMed:3024962, PubMed:3593230, PubMed:3900070, PubMed:7989369). Involved in osteoblast compaction through the fibronectin fibrillogenesis cell-mediated matrix assembly process, essential for osteoblast mineralization (By similarity). Participates in the regulation of type I collagen deposition by osteoblasts (By similarity). Acts as a ligand for the LILRB4 receptor, inhibiting FCGR1A/CD64-mediated monocyte activation (PubMed:34089617).

Cellular Location

Secreted, extracellular space, extracellular matrix. Secreted {ECO:0000250|UniProtKB:P11276}

Tissue Location

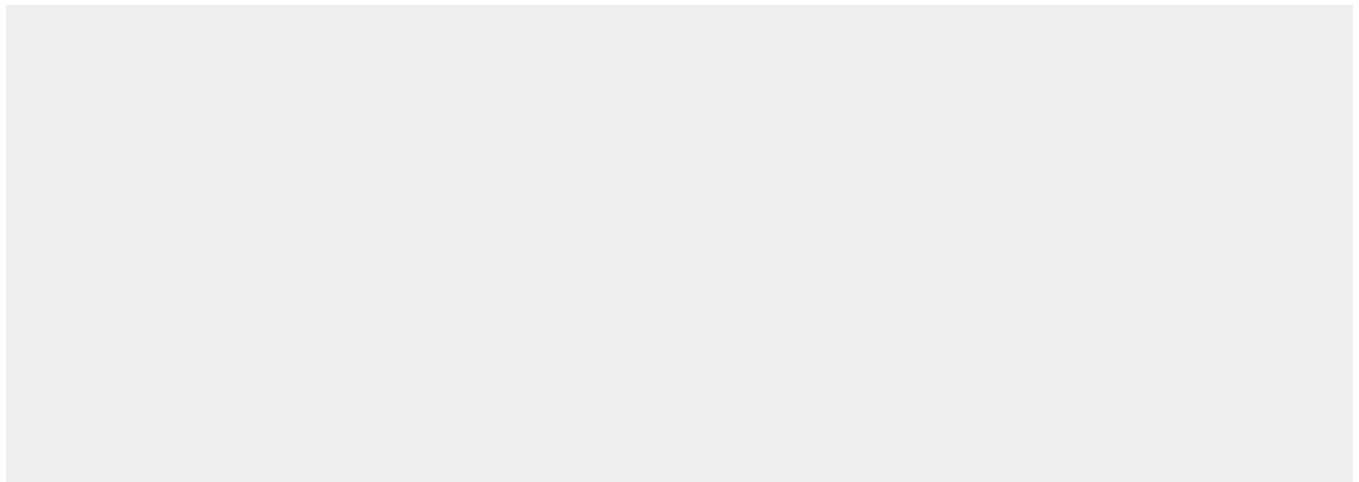
Expressed in the inner limiting membrane and around blood vessels in the retina (at protein level) (PubMed:29777959) Plasma FN (soluble dimeric form) is secreted by hepatocytes. Cellular FN (dimeric or cross-linked multimeric forms), made by fibroblasts, epithelial and other cell types, is deposited as fibrils in the extracellular matrix. Ugl-Y1, Ugl-Y2 and Ugl-Y3 are found in urine (PubMed:17614963).

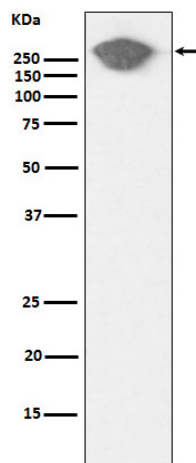
Fibronectin Antibody - Protocols

Provided below are standard protocols that you may find useful for product applications.

- [Western Blot](#)
- [Blocking Peptides](#)
- [Dot Blot](#)
- [Immunohistochemistry](#)
- [Immunofluorescence](#)
- [Immunoprecipitation](#)
- [Flow Cytometry](#)
- [Cell Culture](#)

Fibronectin Antibody - Images





Western blot analysis of Fibronectin expression in Human serum cell lysate.