

NCS1 Antibody
Rabbit mAb
Catalog # AP92684**Specification**

NCS1 Antibody - Product Information

Application	WB, IHC, FC
Primary Accession	P62166
Reactivity	Rat
Clonality	Monoclonal
Other Names	
FLUP; FREQ; Frequenin; Mfreq; ncs1;	

Isotype	Rabbit IgG
Host	Rabbit
Calculated MW	21879 Da

NCS1 Antibody - Additional Information

Dilution	WB~~1:1000 IHC~~1:100~500 FC~~1:10~50
Purification	Affinity-chromatography
Immunogen	A synthesized peptide derived from human NCS1
Description	Neuronal calcium sensor, regulator of G protein-coupled receptor phosphorylation in a calcium dependent manner. Directly regulates GRK1 (RHOK), but not GRK2 to GRK5. Can substitute for calmodulin (By similarity).
Storage Condition and Buffer	Rabbit IgG in phosphate buffered saline , pH 7.4, 150mM NaCl, 0.02% sodium azide and 50% glycerol. Store at +4°C short term. Store at -20°C long term. Avoid freeze / thaw cycle.

NCS1 Antibody - Protein Information**Name** NCS1**Synonyms** FLUP, FREQ**Function**

Neuronal calcium sensor, regulator of G protein-coupled receptor phosphorylation in a calcium dependent manner. Directly regulates GRK1 (RHOK), but not GRK2 to GRK5. Can substitute for calmodulin (By similarity). Stimulates PI4KB kinase activity (By similarity). Involved in long-term synaptic plasticity through its interaction with PICK1 (By similarity). May also play a role in neuron differentiation through inhibition of the activity of N-type voltage- gated calcium channel (By

similarity).

Cellular Location

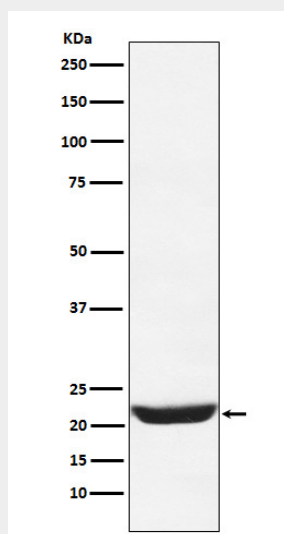
Golgi apparatus. Postsynaptic density. Cytoplasm, perinuclear region. Cytoplasm {ECO:0000250|UniProtKB:P62168}. Cell membrane; Peripheral membrane protein. Membrane {ECO:0000250|UniProtKB:P62168}; Lipid-anchor Note=Associated with Golgi stacks. Post-synaptic densities of dendrites, and in the pre-synaptic nerve terminal at neuromuscular junctions. {ECO:0000305, ECO:0000305|PubMed:17555535}

NCS1 Antibody - Protocols

Provided below are standard protocols that you may find useful for product applications.

- [Western Blot](#)
- [Blocking Peptides](#)
- [Dot Blot](#)
- [Immunohistochemistry](#)
- [Immunofluorescence](#)
- [Immunoprecipitation](#)
- [Flow Cytometry](#)
- [Cell Culture](#)

NCS1 Antibody - Images



Western blot analysis of NCS1 expression in 293T cell lysate.