

BRMS1 Antibody
Rabbit mAb
Catalog # AP92697**Specification**

BRMS1 Antibody - Product Information

Application	WB, IHC, ICC, IP
Primary Accession	Q9HCU9
Clonality	Monoclonal
Other Names	
BRMS1;	
Isotype	Rabbit IgG
Host	Rabbit
Calculated MW	28461 Da

BRMS1 Antibody - Additional Information

Dilution	WB~~1:1000 IHC~~1:100~500 ICC~~N/A IP~~N/A
Purification	Affinity-chromatography
Immunogen	A synthesized peptide derived from human BRMS1
Description	Transcriptional repressor. Down-regulates transcription activation by NF-kappa-B by promoting the deacetylation of RELA at 'Lys-310'. Promotes HDAC1 binding to promoter regions.
Storage Condition and Buffer	Rabbit IgG in phosphate buffered saline , pH 7.4, 150mM NaCl, 0.02% sodium azide and 50% glycerol. Store at +4°C short term. Store at -20°C long term. Avoid freeze / thaw cycle.

BRMS1 Antibody - Protein Information**Name** BRMS1**Function**

Transcriptional repressor. Down-regulates transcription activation by NF-kappa-B by promoting the deacetylation of RELA at 'Lys-310'. Promotes HDAC1 binding to promoter regions. Down-regulates expression of anti-apoptotic genes that are controlled by NF-kappa-B. Promotes apoptosis in cells that have inadequate adherence to a substrate, a process called anoikis, and may thereby inhibit metastasis. May be a mediator of metastasis suppression in breast carcinoma.

Cellular Location

Nucleus. Cytoplasm. Note=Predominantly nuclear.

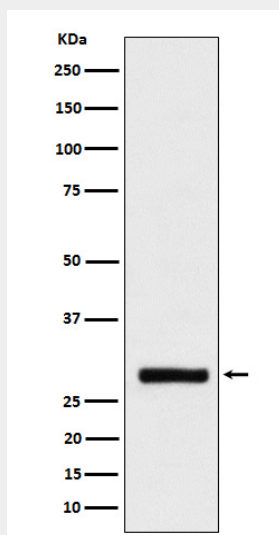
Tissue Location

Expression levels are higher in term placentas than in early placentas. Low levels of expression observed in normal pregnancies and in molar pregnancies.

BRMS1 Antibody - Protocols

Provided below are standard protocols that you may find useful for product applications.

- [Western Blot](#)
- [Blocking Peptides](#)
- [Dot Blot](#)
- [Immunohistochemistry](#)
- [Immunofluorescence](#)
- [Immunoprecipitation](#)
- [Flow Cytometry](#)
- [Cell Culture](#)

BRMS1 Antibody - Images

Western blot analysis of BRMS1 expression in HeLa cell lysate.