

HDGF Antibody
Rabbit mAb
Catalog # AP92698**Specification**

HDGF Antibody - Product Information

Application	WB, IHC, FC, ICC
Primary Accession	P51858
Clonality	Monoclonal
Other Names	
HDGF; HMG1L2;	
Isotype	Rabbit IgG
Host	Rabbit
Calculated MW	26788 Da

HDGF Antibody - Additional Information

Dilution	WB~~1:1000 IHC~~1:100~500 FC~~1:10~50 ICC~~N/A
Purification	Affinity-chromatography
Immunogen	A synthesized peptide derived from human HDGF
Description	Heparin-binding protein, with mitogenic activity for fibroblasts. Acts as a transcriptional repressor.
Storage Condition and Buffer	Rabbit IgG in phosphate buffered saline , pH 7.4, 150mM NaCl, 0.02% sodium azide and 50% glycerol. Store at +4°C short term. Store at -20°C long term. Avoid freeze / thaw cycle.

HDGF Antibody - Protein Information**Name** HDGF**Synonyms** HMG1L2**Function**

[Isoform 1]: Acts as a transcriptional repressor (PubMed:17974029). Has mitogenic activity for fibroblasts (PubMed:11751870, PubMed:26845719). Heparin-binding protein (PubMed:15491618).

Cellular Location

[Isoform 1]: Nucleus. Cytoplasm. Secreted, extracellular exosome. Note=Secreted by exosomes and is located inside the exosome (PubMed:27926477). May also be secreted as free protein via an as yet unknown pathway (PubMed:27926477) [Isoform 3]: Nucleus. Cytoplasm Secreted, extracellular exosome Note=Secreted by exosomes and is located on the outer exosome surface

Tissue Location

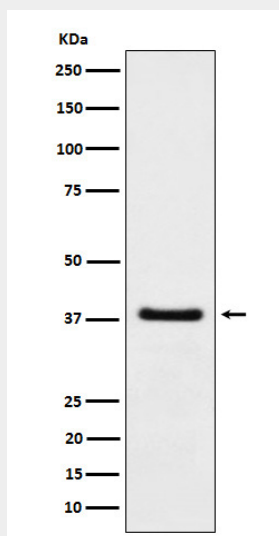
Ubiquitous..

HDGF Antibody - Protocols

Provided below are standard protocols that you may find useful for product applications.

- [Western Blot](#)
- [Blocking Peptides](#)
- [Dot Blot](#)
- [Immunohistochemistry](#)
- [Immunofluorescence](#)
- [Immunoprecipitation](#)
- [Flow Cytometry](#)
- [Cell Culture](#)

HDGF Antibody - Images



Western blot analysis of HDGF expression in A549 cell lysate.