

SBDS Antibody
Rabbit mAb
Catalog # AP92701**Specification****SBDS Antibody - Product Information**

Application	WB
Primary Accession	O9Y3A5
Reactivity	Rat
Clonality	Monoclonal
Other Names	
CGI 97; sbds; SDS; SWDS;	
Isotype	Rabbit IgG
Host	Rabbit
Calculated MW	28764 Da

SBDS Antibody - Additional Information

Dilution	WB~~1:1000
Purification	Affinity-chromatography
Immunogen	A synthesized peptide derived from human SBDS
Description	Required for the assembly of mature ribosomes and ribosome biogenesis.
Storage Condition and Buffer	Rabbit IgG in phosphate buffered saline , pH 7.4, 150mM NaCl, 0.02% sodium azide and 50% glycerol. Store at +4°C short term. Store at -20°C long term. Avoid freeze / thaw cycle.

SBDS Antibody - Protein Information**Name** SBDS**Function**

Required for the assembly of mature ribosomes and ribosome biogenesis. Together with EFL1, triggers the GTP-dependent release of EIF6 from 60S pre-ribosomes in the cytoplasm, thereby activating ribosomes for translation competence by allowing 80S ribosome assembly and facilitating EIF6 recycling to the nucleus, where it is required for 60S rRNA processing and nuclear export. Required for normal levels of protein synthesis. May play a role in cellular stress resistance. May play a role in cellular response to DNA damage. May play a role in cell proliferation.

Cellular Location

Cytoplasm. Nucleus, nucleolus. Nucleus, nucleoplasm. Cytoplasm, cytoskeleton, spindle. Note=Primarily detected in the cytoplasm, and at low levels in nucleus and nucleolus (PubMed:17475909, PubMed:19602484). Detected in the nucleolus during G1 and G2 phase of the cell cycle, and diffusely distributed in the nucleus during S phase. Detected at the mitotic spindle.

Colocalizes with the microtubule organizing center during interphase (PubMed:19759903).

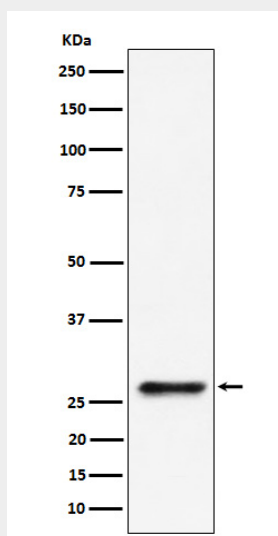
Tissue Location

Widely expressed.

SBDS Antibody - Protocols

Provided below are standard protocols that you may find useful for product applications.

- [Western Blot](#)
- [Blocking Peptides](#)
- [Dot Blot](#)
- [Immunohistochemistry](#)
- [Immunofluorescence](#)
- [Immunoprecipitation](#)
- [Flow Cytometry](#)
- [Cell Culture](#)

SBDS Antibody - Images

Western blot analysis of SBDS expression in 293 cell lysate.