

NCF4 Antibody
Rabbit mAb
Catalog # AP92723**Specification**

NCF4 Antibody - Product Information

Application	WB, IHC, FC, ICC, IP
Primary Accession	Q15080
Clonality	Monoclonal
Other Names	
CGD3; NCF; Ncf4; p40phox; SH3PXD4;	
Isotype	Rabbit IgG
Host	Rabbit
Calculated MW	39032 Da

NCF4 Antibody - Additional Information

Dilution	WB~~1:1000 IHC~~1:100~500 FC~~1:10~50 ICC~~N/A IP~~N/A
Purification	Affinity-chromatography
Immunogen	A synthesized peptide derived from human NCF4
Description	Component of the NADPH-oxidase, a multicomponent enzyme system responsible for the oxidative burst in which electrons are transported from NADPH to molecular oxygen, generating reactive oxidant intermediates. It may be important for the assembly and/or activation of the NADPH-oxidase complex.
Storage Condition and Buffer	Rabbit IgG in phosphate buffered saline , pH 7.4, 150mM NaCl, 0.02% sodium azide and 50% glycerol. Store at +4°C short term. Store at -20°C long term. Avoid freeze / thaw cycle.

NCF4 Antibody - Protein Information**Name** NCF4 ([HGNC:7662](#))**Synonyms** SH3PXD4**Function**

Subunit of the phagocyte NADPH oxidase complex that mediates the transfer of electrons from cytosolic NADPH to O₂ to produce the superoxide anion (O₂⁻) (Probable). In the activated

complex, electrons are first transferred from NADPH to flavin adenine dinucleotide (FAD) and subsequently transferred via two heme molecules to molecular oxygen, producing superoxide through an outer-sphere reaction (By similarity). Activation of the NADPH oxidase complex is initiated by the assembly of cytosolic subunits of the NADPH oxidase complex with the core NADPH oxidase complex to form a complex at the plasma membrane or phagosomal membrane (By similarity). This activation process is initiated by phosphorylation dependent binding of the cytosolic NCF1/p47-phox subunit to the C-terminus of CYBA/p22-phox (By similarity).

Cellular Location

Cytoplasm, cytosol. Endosome membrane; Peripheral membrane protein; Cytoplasmic side. Membrane; Peripheral membrane protein. Note=Translocates to the membrane upon activation by phorbol myristate acetate (PMA)

Tissue Location

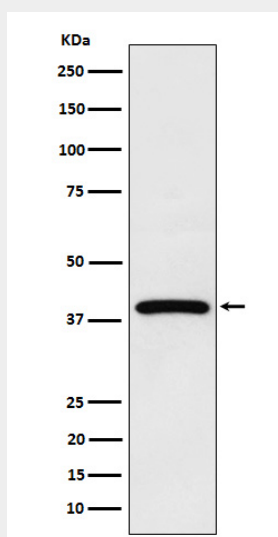
Expression is restricted to hematopoietic cells.

NCF4 Antibody - Protocols

Provided below are standard protocols that you may find useful for product applications.

- [Western Blot](#)
- [Blocking Peptides](#)
- [Dot Blot](#)
- [Immunohistochemistry](#)
- [Immunofluorescence](#)
- [Immunoprecipitation](#)
- [Flow Cytometry](#)
- [Cell Culture](#)

NCF4 Antibody - Images



Western blot analysis of NCF4 expression in MCF7 cell lysate.