

TUB1 Antibody
Rabbit mAb
Catalog # AP92726**Specification**

TUB1 Antibody - Product Information

Application	WB, IHC
Primary Accession	P50607
Reactivity	Rat
Clonality	Monoclonal
Other Names	
rd5; TUB 1; TUB;	
Isotype	Rabbit IgG
Host	Rabbit
Calculated MW	55651 Da

TUB1 Antibody - Additional Information

Dilution	WB~~1:1000 IHC~~1:100~500
Purification	Affinity-chromatography
Immunogen	A synthesized peptide derived from human TUB1
Description	Functions in signal transduction from heterotrimeric G protein-coupled receptors. Binds to membranes containing phosphatidylinositol 4,5-bisphosphate.
Storage Condition and Buffer	Rabbit IgG in phosphate buffered saline , pH 7.4, 150mM NaCl, 0.02% sodium azide and 50% glycerol. Store at +4°C short term. Store at -20°C long term. Avoid freeze / thaw cycle.

TUB1 Antibody - Protein Information**Name** TUB**Function**

Functions in signal transduction from heterotrimeric G protein-coupled receptors. Binds to membranes containing phosphatidylinositol 4,5-bisphosphate. Can bind DNA (in vitro). May contribute to the regulation of transcription in the nucleus. Could be involved in the hypothalamic regulation of body weight (By similarity). Contribute to stimulation of phagocytosis of apoptotic retinal pigment epithelium (RPE) cells and macrophages.

Cellular Location

Cytoplasm. Nucleus. Secreted. Cell membrane; Peripheral membrane protein; Cytoplasmic side
Note=Binds phospholipid and is anchored to the plasma membrane through binding phosphatidylinositol 4,5-bisphosphate. Is released upon activation of phospholipase C.

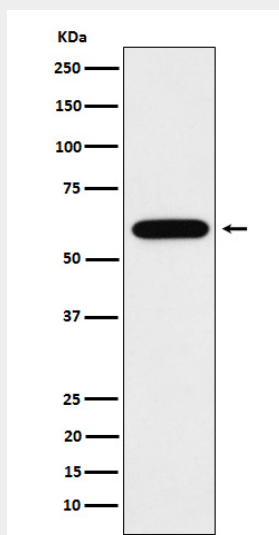
Translocates from the plasma membrane to the nucleus upon activation of guanine nucleotide-binding protein G(q) subunit alpha. Does not have a cleavable signal peptide and is secreted by a non-conventional pathway (By similarity).

TUB1 Antibody - Protocols

Provided below are standard protocols that you may find useful for product applications.

- [Western Blot](#)
- [Blocking Peptides](#)
- [Dot Blot](#)
- [Immunohistochemistry](#)
- [Immunofluorescence](#)
- [Immunoprecipitation](#)
- [Flow Cytometry](#)
- [Cell Culture](#)

TUB1 Antibody - Images



Western blot analysis of TUB1 expression in Neuro-2a cell lysate.