

LTB4R Antibody
Rabbit mAb
Catalog # AP92727**Specification**

LTB4R Antibody - Product Information

Application	WB, IHC
Primary Accession	Q15722
Clonality	Monoclonal
Other Names	
BLT; BLT1; BLTR; CMKRL1; GPR16; LTB4R1; LTBR1; P2RY7; P2Y7;	
Isotype	Rabbit IgG
Host	Rabbit
Calculated MW	37557 Da

LTB4R Antibody - Additional Information

Dilution	WB~~1:1000 IHC~~1:100~500
Purification	Affinity-chromatography
Immunogen	A synthesized peptide derived from human LTB4R
Description	Receptor for extracellular ATP > UTP and ADP. The activity of this receptor is mediated by G proteins which activate a phosphatidylinositol-calcium second messenger system.
Storage Condition and Buffer	Rabbit IgG in phosphate buffered saline , pH 7.4, 150mM NaCl, 0.02% sodium azide and 50% glycerol. Store at +4°C short term. Store at -20°C long term. Avoid freeze / thaw cycle.

LTB4R Antibody - Protein Information**Name** LTB4R**Synonyms** BLT, BLT1, BLTR, CMKRL1, GPR16, P2RY7**Function**

Receptor for extracellular ATP > UTP and ADP. The activity of this receptor is mediated by G proteins which activate a phosphatidylinositol-calcium second messenger system. May be the cardiac P2Y receptor involved in the regulation of cardiac muscle contraction through modulation of L-type calcium currents. Is a receptor for leukotriene B4, a potent chemoattractant involved in inflammation and immune response.

Cellular Location

Cell membrane; Multi-pass membrane protein.

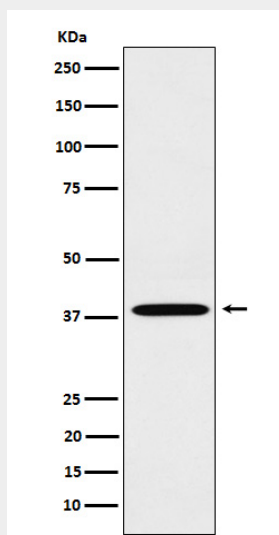
Tissue Location

Expressed at highest levels in heart, skeletal muscle and at lower levels in brain and liver. High level of expression in lymphoid tissues

LTB4R Antibody - Protocols

Provided below are standard protocols that you may find useful for product applications.

- [Western Blot](#)
- [Blocking Peptides](#)
- [Dot Blot](#)
- [Immunohistochemistry](#)
- [Immunofluorescence](#)
- [Immunoprecipitation](#)
- [Flow Cytometry](#)
- [Cell Culture](#)

LTB4R Antibody - Images

Western blot analysis of LTB4R expression in A549 cell lysate.