

ARPC2 Antibody
Rabbit mAb
Catalog # AP92728**Specification**

ARPC2 Antibody - Product Information

Application WB, IHC, FC, ICC, IP
Primary Accession [O15144](#)
Reactivity Rat
Clonality Monoclonal
Other Names
ARC34; Arpc2; p34Arc; PNAS139; PRO2446;

Isotype Rabbit IgG
Host Rabbit
Calculated MW 34333 Da

ARPC2 Antibody - Additional Information

Dilution WB~~1:1000
IHC~~1:100~500
FC~~1:10~50
ICC~~N/A
IP~~N/A
Purification Affinity-chromatography
Immunogen A synthesized peptide derived from human ARPC2
Description Functions as actin-binding component of the Arp2/3 complex which is involved in regulation of actin polymerization and together with an activating nucleation-promoting factor (NPF) mediates the formation of branched actin networks. Seems to contact the mother actin filament.
Storage Condition and Buffer Rabbit IgG in phosphate buffered saline , pH 7.4, 150mM NaCl, 0.02% sodium azide and 50% glycerol. Store at +4°C short term. Store at -20°C long term. Avoid freeze / thaw cycle.

ARPC2 Antibody - Protein Information**Name** ARPC2**Synonyms** ARC34**Function**

Actin-binding component of the Arp2/3 complex, a multiprotein complex that mediates actin

polymerization upon stimulation by nucleation-promoting factor (NPF) (PubMed:9230079). The Arp2/3 complex mediates the formation of branched actin networks in the cytoplasm, providing the force for cell motility (PubMed:9230079). Seems to contact the mother actin filament (PubMed:9230079). In addition to its role in the cytoplasmic cytoskeleton, the Arp2/3 complex also promotes actin polymerization in the nucleus, thereby regulating gene transcription and repair of damaged DNA (PubMed:29925947). The Arp2/3 complex promotes homologous recombination (HR) repair in response to DNA damage by promoting nuclear actin polymerization, leading to drive motility of double-strand breaks (DSBs) (PubMed:29925947).

Cellular Location

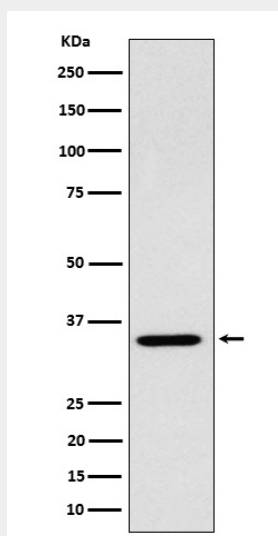
Cytoplasm, cytoskeleton. Cell projection. Synapse, synaptosome {ECO:0000250|UniProtKB:Q9CVB6}. Nucleus

ARPC2 Antibody - Protocols

Provided below are standard protocols that you may find useful for product applications.

- [Western Blot](#)
- [Blocking Peptides](#)
- [Dot Blot](#)
- [Immunohistochemistry](#)
- [Immunofluorescence](#)
- [Immunoprecipitation](#)
- [Flow Cytometry](#)
- [Cell Culture](#)

ARPC2 Antibody - Images



Western blot analysis of ARPC2 expression in 293 cell lysate.