

TUG Antibody
Rabbit mAb
Catalog # AP92737

Specification

TUG Antibody - Product Information

Application	WB, IHC
Primary Accession	Q9BZE9
Reactivity	Rat
Clonality	Monoclonal
Other Names	
ASPC; ASPCR1; ASPL; ASPS; Aspscr1; RCC17; TUG; UBXD9; UBXN9;	
Isotype	Rabbit IgG
Host	Rabbit
Calculated MW	60183 Da

TUG Antibody - Additional Information

Dilution	WB~~1:1000 IHC~~1:100~500
Purification	Affinity-chromatography
Immunogen	A synthesized peptide derived from human TUG
Description	Tethering protein that sequesters GLUT4-containing vesicles in the cytoplasm in the absence of insulin. Modulates the amount of GLUT4 that is available at the cell surface.
Storage Condition and Buffer	Rabbit IgG in phosphate buffered saline , pH 7.4, 150mM NaCl, 0.02% sodium azide and 50% glycerol. Store at +4°C short term. Store at -20°C long term. Avoid freeze / thaw cycle.

TUG Antibody - Protein Information

Name ASPSCR1

Synonyms ASPL, RCC17, TUG, UBXD9, UBXN9

Function

Tethering protein that sequesters GLUT4-containing vesicles in the cytoplasm in the absence of insulin. Modulates the amount of GLUT4 that is available at the cell surface (By similarity). Enhances VCP methylation catalyzed by VCPKMT.

Cellular Location

Endomembrane system; Peripheral membrane protein. Endoplasmic reticulum-Golgi intermediate compartment membrane; Peripheral membrane protein. Cytoplasm Nucleus

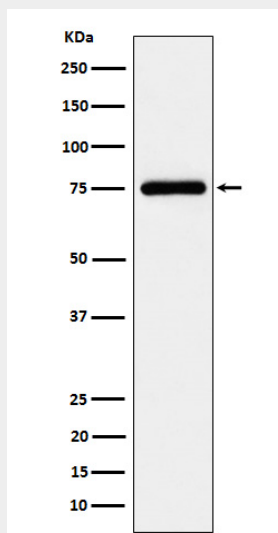
Tissue Location

Ubiquitous. Highly expressed in testis, heart, skeletal muscle and pancreas.

TUG Antibody - Protocols

Provided below are standard protocols that you may find useful for product applications.

- [Western Blot](#)
- [Blocking Peptides](#)
- [Dot Blot](#)
- [Immunohistochemistry](#)
- [Immunofluorescence](#)
- [Immunoprecipitation](#)
- [Flow Cytometry](#)
- [Cell Culture](#)

TUG Antibody - Images

Western blot analysis of TUG expression in K562 cell lysate.