

KCTD12 Antibody (Center)
Affinity Purified Rabbit Polyclonal Antibody (Pab)
Catalog # AP9273c**Specification**

KCTD12 Antibody (Center) - Product Information

Application	FC, IHC-P, WB,E
Primary Accession	O96CX2
Other Accession	O6WVG3
Reactivity	Human
Predicted	Mouse
Host	Rabbit
Clonality	Polyclonal
Isotype	Rabbit IgG
Antigen Region	242-269

KCTD12 Antibody (Center) - Additional Information**Gene ID** 115207**Other Names**

BTB/POZ domain-containing protein KCTD12, Pfetin, Predominantly fetal expressed T1 domain, KCTD12, C13orf2, KIAA1778, PFET1

Target/Specificity

This KCTD12 antibody is generated from rabbits immunized with a KLH conjugated synthetic peptide between 242-269 amino acids from the Central region of human KCTD12.

Dilution

FC~~1:10~50

IHC-P~~1:50~100

WB~~1:1000

E~~Use at an assay dependent concentration.

Format

Purified polyclonal antibody supplied in PBS with 0.09% (W/V) sodium azide. This antibody is purified through a protein A column, followed by peptide affinity purification.

Storage

Maintain refrigerated at 2-8°C for up to 2 weeks. For long term storage store at -20°C in small aliquots to prevent freeze-thaw cycles.

Precautions

KCTD12 Antibody (Center) is for research use only and not for use in diagnostic or therapeutic procedures.

KCTD12 Antibody (Center) - Protein Information

Name KCTD12

Synonyms C13orf2, KIAA1778, PFET1

Function Auxiliary subunit of GABA-B receptors that determine the pharmacology and kinetics of the receptor response. Increases agonist potency and markedly alter the G-protein signaling of the receptors by accelerating onset and promoting desensitization (By similarity).

Cellular Location

Presynaptic cell membrane. Postsynaptic cell membrane

Tissue Location

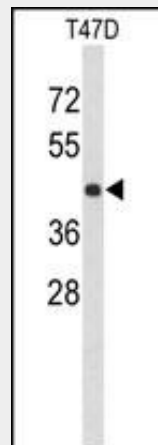
Present in a variety of fetal organs, with highest expression levels in the cochlea and brain and, in stark contrast, is detected only at extremely low levels in adult organs, such as brain and lung.

KCTD12 Antibody (Center) - Protocols

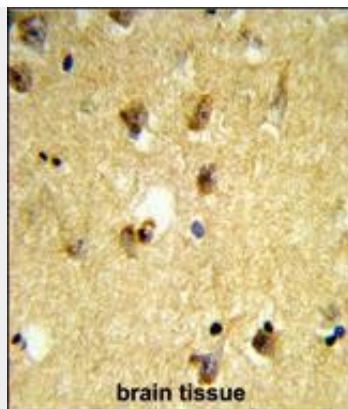
Provided below are standard protocols that you may find useful for product applications.

- [Western Blot](#)
- [Blocking Peptides](#)
- [Dot Blot](#)
- [Immunohistochemistry](#)
- [Immunofluorescence](#)
- [Immunoprecipitation](#)
- [Flow Cytometry](#)
- [Cell Culture](#)

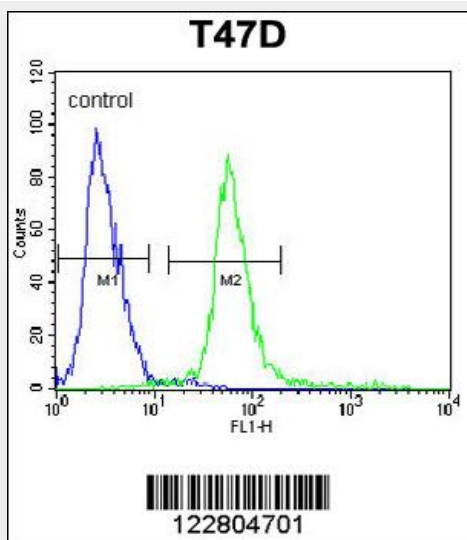
KCTD12 Antibody (Center) - Images



Western blot analysis of KCTD12 Antibody (Center) (Cat. #AP9273c) in T47D cell line lysates (35ug/lane). KCTD12 (arrow) was detected using the purified Pab.



Formalin-fixed and paraffin-embedded human brain tissue reacted with KCTD12 Antibody (Center), which was peroxidase-conjugated to the secondary antibody, followed by DAB staining. This data demonstrates the use of this antibody for immunohistochemistry; clinical relevance has not been evaluated.



KCTD12 Antibody (Center) (Cat. #AP9273c) flow cytometric analysis of T47D cells (right histogram) compared to a negative control (left histogram). FITC-conjugated goat-anti-rabbit secondary antibodies were used for the analysis.

KCTD12 Antibody (Center) - References

Drenos, F., et al., Hum. Mol. Genet. 18 (12), 2305-2316 (2009) Suehara, Y., et al., Clin. Cancer Res. 14 (6), 1707-1717 (2008) Cauchi, S., et al., J. Mol. Med. 86 (3), 341-348 (2008)