

**CD84 Antibody**  
**Rabbit mAb**  
**Catalog # AP92741**

## Specification

---

### CD84 Antibody - Product Information

Application	WB, IHC
Primary Accession	<a href="#">Q9UIB8</a>
Clonality	Monoclonal
<b>Other Names</b>	
CD84; CDw84; hCD84; LY9B; mCD84; SLAMF5;	
Isotype	Rabbit IgG
Host	Rabbit
Calculated MW	38782 Da

### CD84 Antibody - Additional Information

Dilution	WB~~1:1000 IHC~~1:100~500
Purification	Affinity-chromatography
Immunogen	A synthesized peptide derived from human CD84
Description	Plays a role as adhesion receptor functioning by homophilic interactions and by clustering. Recruits SH2 domain-containing proteins SH2D1A/SAP.
Storage Condition and Buffer	Rabbit IgG in phosphate buffered saline , pH 7.4, 150mM NaCl, 0.02% sodium azide and 50% glycerol. Store at +4°C short term. Store at -20°C long term. Avoid freeze / thaw cycle.

### CD84 Antibody - Protein Information

**Name** CD84

**Synonyms** SLAMF5

#### Function

Self-ligand receptor of the signaling lymphocytic activation molecule (SLAM) family. SLAM receptors triggered by homo- or heterotypic cell-cell interactions are modulating the activation and differentiation of a wide variety of immune cells and thus are involved in the regulation and interconnection of both innate and adaptive immune response. Activities are controlled by presence or absence of small cytoplasmic adapter proteins, SH2D1A/SAP and/or SH2D1B/EAT-2. Can mediate natural killer (NK) cell cytotoxicity dependent on SH2D1A and SH2D1B (By similarity). Increases proliferative responses of activated T-cells and SH2D1A/SAP does not seem be required for this process. Homophilic interactions enhance interferon gamma/IFNG secretion in lymphocytes and induce platelet stimulation via a SH2D1A-dependent pathway. May serve as a marker for

hematopoietic progenitor cells (PubMed:<a href="http://www.uniprot.org/citations/11564780" target="\_blank">11564780</a>, PubMed:<a href="http://www.uniprot.org/citations/12115647" target="\_blank">12115647</a>, PubMed:<a href="http://www.uniprot.org/citations/12928397" target="\_blank">12928397</a>, PubMed:<a href="http://www.uniprot.org/citations/12962726" target="\_blank">12962726</a>, PubMed:<a href="http://www.uniprot.org/citations/16037392" target="\_blank">16037392</a>) Required for a prolonged T-cell:B-cell contact, optimal T follicular helper function, and germinal center formation. In germinal centers involved in maintaining B-cell tolerance and in preventing autoimmunity (By similarity). In mast cells negatively regulates high affinity immunoglobulin epsilon receptor signaling; independent of SH2D1A and SH2D1B but implicating FES and PTPN6/SHP-1 (PubMed:<a href="http://www.uniprot.org/citations/22068234" target="\_blank">22068234</a>). In macrophages enhances LPS-induced MAPK phosphorylation and NF-kappaB activation and modulates LPS-induced cytokine secretion; involving ITSM 2 (By similarity). Positively regulates macroautophagy in primary dendritic cells via stabilization of IRF8; inhibits TRIM21-mediated proteasomal degradation of IRF8 (PubMed:<a href="http://www.uniprot.org/citations/29434592" target="\_blank">29434592</a>).

### Cellular Location

Cell membrane; Single-pass type I membrane protein

### Tissue Location

Predominantly expressed in hematopoietic tissues, such as lymph node, spleen and peripheral leukocytes. Expressed in macrophages, B-cells, monocytes, platelets, thymocytes, T-cells and dendritic cells. Highly expressed in memory T-cells. Expressed in mast cells.

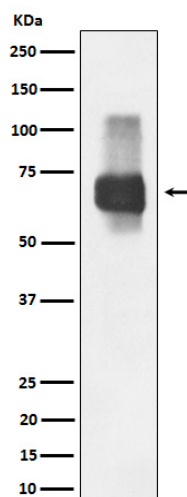
## CD84 Antibody - Protocols

Provided below are standard protocols that you may find useful for product applications.

- [Western Blot](#)
- [Blocking Peptides](#)
- [Dot Blot](#)
- [Immunohistochemistry](#)
- [Immunofluorescence](#)
- [Immunoprecipitation](#)
- [Flow Cytometry](#)
- [Cell Culture](#)

## CD84 Antibody - Images





Western blot analysis of CD84 expression in Raji cell lysate.