

**ORP1 Antibody**  
Rabbit mAb  
Catalog # AP92749

## Specification

---

### ORP1 Antibody - Product Information

Application	WB, FC, ICC
Primary Accession	<a href="#">Q9BXW6</a>
Reactivity	Rat
Clonality	Monoclonal
<b>Other Names</b>	
ORP1; OSBP8; OSBPL1; OSBPL1A; OSBPL1B;	
Isotype	Rabbit IgG
Host	Rabbit
Calculated MW	108470 Da

### ORP1 Antibody - Additional Information

Dilution	WB~~1:1000 FC~~1:10~50 ICC~~N/A
Purification	Affinity-chromatography
Immunogen	A synthesized peptide derived from human ORP1
Description	Binds phospholipids; exhibits strong binding to phosphatidic acid and weak binding to phosphatidylinositol 3-phosphate.
Storage Condition and Buffer	Rabbit IgG in phosphate buffered saline , pH 7.4, 150mM NaCl, 0.02% sodium azide and 50% glycerol. Store at +4°C short term. Store at -20°C long term. Avoid freeze / thaw cycle.

### ORP1 Antibody - Protein Information

Name OSBPL1A ([HGNC:16398](#))

#### Function

Binds phospholipids; exhibits strong binding to phosphatidic acid and weak binding to phosphatidylinositol 3-phosphate (By similarity). Stabilizes GTP-bound RAB7A on late endosomes/lysosomes and alters functional properties of late endocytic compartments via its interaction with RAB7A (PubMed:<a href="http://www.uniprot.org/citations/16176980" target="\_blank">16176980</a>). Binds 25-hydroxycholesterol and cholesterol (PubMed:<a href="http://www.uniprot.org/citations/17428193" target="\_blank">17428193</a>).

#### Cellular Location

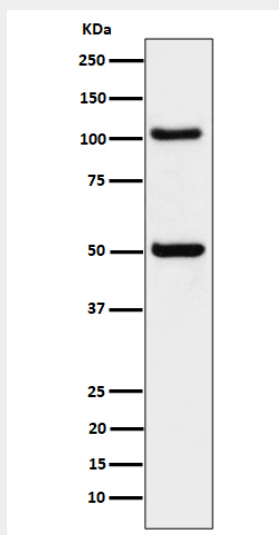
Late endosome. Note=Colocalizes with RAB7A, RAB9A and LAMP1 in late endosomes

## ORP1 Antibody - Protocols

Provided below are standard protocols that you may find useful for product applications.

- [Western Blot](#)
- [Blocking Peptides](#)
- [Dot Blot](#)
- [Immunohistochemistry](#)
- [Immunofluorescence](#)
- [Immunoprecipitation](#)
- [Flow Cytometry](#)
- [Cell Culture](#)

## ORP1 Antibody - Images



Western blot analysis of ORP1 expression in 293 cell lysate.