

CBARP Antibody (Center)
Affinity Purified Rabbit Polyclonal Antibody (Pab)
Catalog # AP9274c**Specification**

CBARP Antibody (Center) - Product Information

Application	WB, FC,E
Primary Accession	Q8N350
Reactivity	Human
Host	Rabbit
Clonality	Polyclonal
Isotype	Rabbit IgG
Antigen Region	423-450

CBARP Antibody (Center) - Additional Information**Gene ID** 255057**Other Names**

Protein Dos, DOS, C19orf26

Target/Specificity

This C19orf26 antibody is generated from rabbits immunized with a KLH conjugated synthetic peptide between 423-450 amino acids from the Central region of human C19orf26.

Dilution

WB~~1:1000

FC~~1:10~50

E~~Use at an assay dependent concentration.

Format

Purified polyclonal antibody supplied in PBS with 0.09% (W/V) sodium azide. This antibody is purified through a protein A column, followed by peptide affinity purification.

Storage

Maintain refrigerated at 2-8°C for up to 2 weeks. For long term storage store at -20°C in small aliquots to prevent freeze-thaw cycles.

Precautions

CBARP Antibody (Center) is for research use only and not for use in diagnostic or therapeutic procedures.

CBARP Antibody (Center) - Protein Information**Name** CBARP ([HGNC:28617](#))

Function Negatively regulates voltage-gated calcium channels by preventing the interaction between their alpha and beta subunits. Thereby, negatively regulates calcium channels activity at

the plasma membrane and indirectly inhibits calcium-regulated exocytosis.

Cellular Location

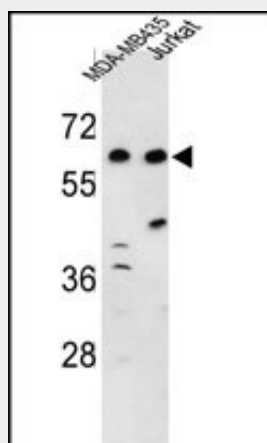
Cytoplasmic vesicle, secretory vesicle, synaptic vesicle membrane {ECO:0000250|UniProtKB:Q66L44}; Single-pass type III membrane protein {ECO:0000250|UniProtKB:Q66L44}. Cell membrane {ECO:0000250|UniProtKB:Q66L44}; Single-pass type III membrane protein {ECO:0000250|UniProtKB:Q66L44}. Cell projection, growth cone {ECO:0000250|UniProtKB:Q66L44}

CBARP Antibody (Center) - Protocols

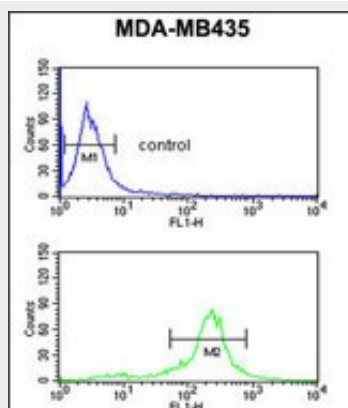
Provided below are standard protocols that you may find useful for product applications.

- [Western Blot](#)
- [Blocking Peptides](#)
- [Dot Blot](#)
- [Immunohistochemistry](#)
- [Immunofluorescence](#)
- [Immunoprecipitation](#)
- [Flow Cytometry](#)
- [Cell Culture](#)

CBARP Antibody (Center) - Images



Western blot analysis of C19orf26 Antibody (Center)(Cat. #AP9274c) in MDA-MB435, Jurkat cell line lysates (35ug/lane). C19orf26 (arrow) was detected using the purified Pab.



C19orf26 Antibody (Center) (Cat. #AP9274c) flow cytometric analysis of MDA-MB435 cells (bottom histogram) compared to a negative control cell (top histogram).FITC-conjugated goat-anti-rabbit secondary antibodies were used for the analysis.

CBARP Antibody (Center) - References

Olsen,J.V., et.al., Cell 127 (3), 635-648 (2006)
Grimwood,J., et.al., Nature 428 (6982), 529-535 (2004)