

CNTN4 Antibody
Rabbit mAb
Catalog # AP92750**Specification**

CNTN4 Antibody - Product Information

Application	WB, IHC
Primary Accession	Q8I WV2
Clonality	Monoclonal
Other Names	
AXCAM; BIG 2; Cntn4; CNTN4A; contactin 4; SCA16;	
Isotype	Rabbit IgG
Host	Rabbit
Calculated MW	113454 Da

CNTN4 Antibody - Additional Information

Dilution	WB~~1:1000 IHC~~1:100~500
Purification	Affinity-chromatography
Immunogen	A synthesized peptide derived from human CNTN4
Description	Contactins mediate cell surface interactions during nervous system development. Has some neurite outgrowth-promoting activity. May be involved in synaptogenesis.
Storage Condition and Buffer	Rabbit IgG in phosphate buffered saline , pH 7.4, 150mM NaCl, 0.02% sodium azide and 50% glycerol. Store at +4°C short term. Store at -20°C long term. Avoid freeze / thaw cycle.

CNTN4 Antibody - Protein Information**Name** CNTN4**Function**

Contactins mediate cell surface interactions during nervous system development. Has some neurite outgrowth-promoting activity. May be involved in synaptogenesis.

Cellular Location

Cell membrane; Lipid-anchor, GPI-anchor. Secreted

Tissue Location

Mainly expressed in brain. Highly expressed in cerebellum and weakly expressed in corpus callosum, caudate nucleus, amygdala and spinal cord. Also expressed in testis, pancreas, thyroid, uterus, small intestine and kidney. Not expressed in skeletal muscle Isoform 2 is weakly expressed

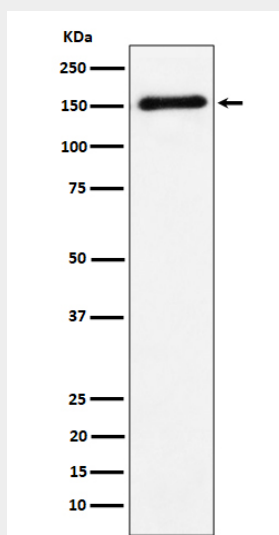
in cerebral cortex

CNTN4 Antibody - Protocols

Provided below are standard protocols that you may find useful for product applications.

- [Western Blot](#)
- [Blocking Peptides](#)
- [Dot Blot](#)
- [Immunohistochemistry](#)
- [Immunofluorescence](#)
- [Immunoprecipitation](#)
- [Flow Cytometry](#)
- [Cell Culture](#)

CNTN4 Antibody - Images



Western blot analysis of CNTN4 expression in Human cerebellum cell lysate.