

CAP1 Antibody
Rabbit mAb
Catalog # AP92754**Specification**

CAP1 Antibody - Product Information

Application WB, IHC, ICC
Primary Accession [Q01518](#)
Clonality Monoclonal
Other Names
CAP1; CAP1 PEN;

Isotype Rabbit IgG
Host Rabbit
Calculated MW 51901 Da

CAP1 Antibody - Additional Information

Dilution WB~~1:1000
IHC~~1:100~500
ICC~~N/A
Purification Affinity-chromatography
Immunogen A synthesized peptide derived from human CAP1
Description Directly regulates filament dynamics and has been implicated in a number of complex developmental and morphological processes, including mRNA localization and the establishment of cell polarity.
Storage Condition and Buffer Rabbit IgG in phosphate buffered saline , pH 7.4, 150mM NaCl, 0.02% sodium azide and 50% glycerol. Store at +4°C short term. Store at -20°C long term. Avoid freeze / thaw cycle.

CAP1 Antibody - Protein Information**Name** CAP1**Synonyms** CAP**Function**

Directly regulates filament dynamics and has been implicated in a number of complex developmental and morphological processes, including mRNA localization and the establishment of cell polarity.

Cellular Location

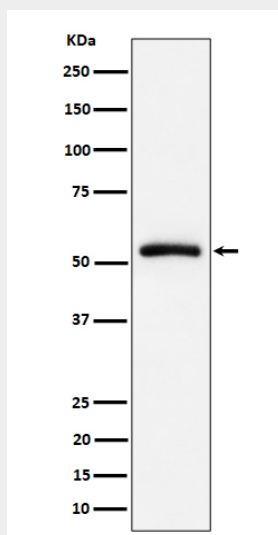
Cell membrane; Peripheral membrane protein

CAP1 Antibody - Protocols

Provided below are standard protocols that you may find useful for product applications.

- [Western Blot](#)
- [Blocking Peptides](#)
- [Dot Blot](#)
- [Immunohistochemistry](#)
- [Immunofluorescence](#)
- [Immunoprecipitation](#)
- [Flow Cytometry](#)
- [Cell Culture](#)

CAP1 Antibody - Images



Western blot analysis of CAP1 expression in Raji cell lysate.