

**TSPEAR Antibody (Center)**  
**Affinity Purified Rabbit Polyclonal Antibody (Pab)**  
**Catalog # AP9275c**

**Specification**

---

**TSPEAR Antibody (Center) - Product Information**

Application	WB, IHC-P, FC,E
Primary Accession	<a href="#">Q8WU66</a>
Reactivity	Human
Host	Rabbit
Clonality	Polyclonal
Isotype	Rabbit IgG
Antigen Region	293-320

**TSPEAR Antibody (Center) - Additional Information**

**Gene ID** 54084

**Other Names**

Thrombospondin-type laminin G domain and EAR repeat-containing protein, TSP-EAR, TSPEAR, C21orf29

**Target/Specificity**

This C21orf29 antibody is generated from rabbits immunized with a KLH conjugated synthetic peptide between 293-320 amino acids from the Central region of human C21orf29.

**Dilution**

WB~~1:1000  
IHC-P~~1:50~100  
FC~~1:10~50  
E~~Use at an assay dependent concentration.

**Format**

Purified polyclonal antibody supplied in PBS with 0.09% (W/V) sodium azide. This antibody is purified through a protein A column, followed by peptide affinity purification.

**Storage**

Maintain refrigerated at 2-8°C for up to 2 weeks. For long term storage store at -20°C in small aliquots to prevent freeze-thaw cycles.

**Precautions**

TSPEAR Antibody (Center) is for research use only and not for use in diagnostic or therapeutic procedures.

**TSPEAR Antibody (Center) - Protein Information**

**Name** TSPEAR

## Synonyms C21orf29

**Function** Plays a critical role in tooth and hair follicle morphogenesis through regulation of the Notch signaling pathway (PubMed:[27736875](#)). May play a role in development or function of the auditory system (PubMed:[22678063](#)).

## Cellular Location

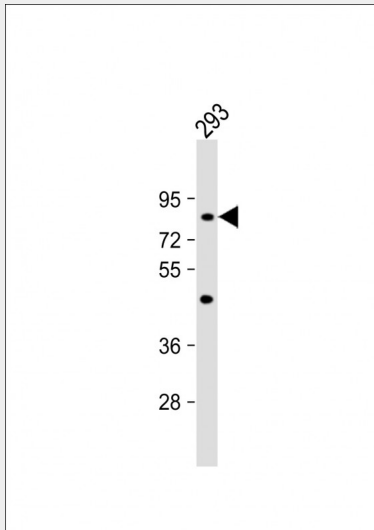
Secreted {ECO:0000250|UniProtKB:J3S6Y1}. Cell surface {ECO:0000250|UniProtKB:J3S6Y1}. Cell projection, stereocilium {ECO:0000250|UniProtKB:J3S6Y1}. Note=Secreted protein which may bind to the cell surface via a membrane receptor {ECO:0000250|UniProtKB:J3S6Y1}

## TSPEAR Antibody (Center) - Protocols

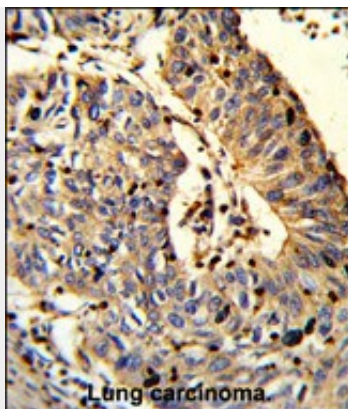
Provided below are standard protocols that you may find useful for product applications.

- [Western Blot](#)
- [Blocking Peptides](#)
- [Dot Blot](#)
- [Immunohistochemistry](#)
- [Immunofluorescence](#)
- [Immunoprecipitation](#)
- [Flow Cytometry](#)
- [Cell Culture](#)

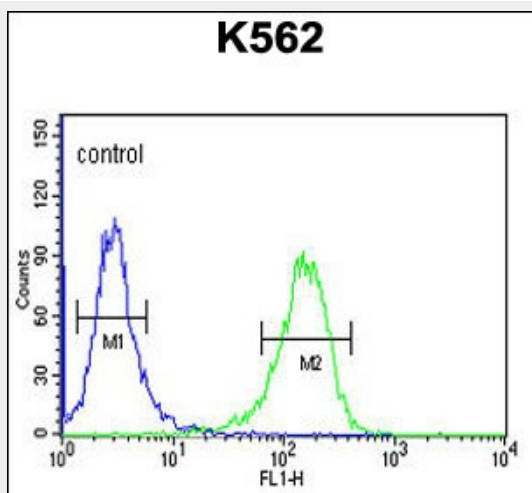
## TSPEAR Antibody (Center) - Images



Anti-C21orf29 Antibody (Center) at 1:1000 dilution + 293 whole cell lysate Lysates/proteins at 20 µg per lane. Secondary Goat Anti-Rabbit IgG, (H+L), Peroxidase conjugated at 1/10000 dilution. Predicted band size : 75 kDa Blocking/Dilution buffer: 5% NFDM/TBST.



Formalin-fixed and paraffin-embedded human Lung carcinoma reacted with C21orf29 Antibody (Center), which was peroxidase-conjugated to the secondary antibody, followed by DAB staining. This data demonstrates the use of this antibody for immunohistochemistry; clinical relevance has not been evaluated.



C21orf29 Antibody (Center) (Cat. #AP9275c) flow cytometric analysis of K562 cells (right histogram) compared to a negative control cell (left histogram). FITC-conjugated goat-anti-rabbit secondary antibodies were used for the analysis.

#### TSPEAR Antibody (Center) - References

Scheel, H., et al., Hum. Mol. Genet. 11 (15), 1757-1762 (2002)

#### TSPEAR Antibody (Center) - Citations

- [Defect in the gene encoding the EAR/EPTP domain-containing protein TSPEAR causes DFNB98 profound deafness.](#)