

DCAF7 Antibody
Rabbit mAb
Catalog # AP92767

Specification

DCAF7 Antibody - Product Information

Application	WB, IHC, FC
Primary Accession	P61962
Clonality	Monoclonal
Other Names	
AN11; Dcaf7; HAN11; WDR68;	
Isotype	Rabbit IgG
Host	Rabbit
Calculated MW	38926 Da

DCAF7 Antibody - Additional Information

Dilution	WB~~1:1000 IHC~~1:100~500 FC~~1:10~50
Purification	Affinity-chromatography
Immunogen	A synthesized peptide derived from human DCAF7
Description	Involved in craniofacial development. Acts upstream of the EDN1 pathway and is required for formation of the upper jaw equivalent, the palatoquadrate.
Storage Condition and Buffer	Rabbit IgG in phosphate buffered saline , pH 7.4, 150mM NaCl, 0.02% sodium azide and 50% glycerol. Store at +4°C short term. Store at -20°C long term. Avoid freeze / thaw cycle.

DCAF7 Antibody - Protein Information

Name DCAF7

Synonyms HAN11, WDR68

Function

Involved in craniofacial development. Acts upstream of the EDN1 pathway and is required for formation of the upper jaw equivalent, the palatoquadrate. The activity required for EDN1 pathway function differs between the first and second arches (By similarity). Associates with DIAPH1 and controls GLI1 transcriptional activity. Could be involved in normal and disease skin development. May function as a substrate receptor for CUL4-DDB1 E3 ubiquitin-protein ligase complex.

Cellular Location

Cytoplasm. Nucleus. Note=Overexpression of DIAHP1 or active RHOA causes translocation from

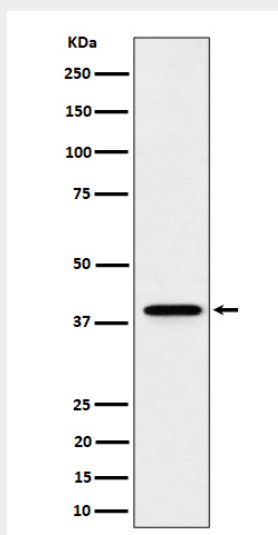
the nucleus to cytoplasm

DCAF7 Antibody - Protocols

Provided below are standard protocols that you may find useful for product applications.

- [Western Blot](#)
- [Blocking Peptides](#)
- [Dot Blot](#)
- [Immunohistochemistry](#)
- [Immunofluorescence](#)
- [Immunoprecipitation](#)
- [Flow Cytometry](#)
- [Cell Culture](#)

DCAF7 Antibody - Images



Western blot analysis of DCAF7 expression in HeLa cell lysate.